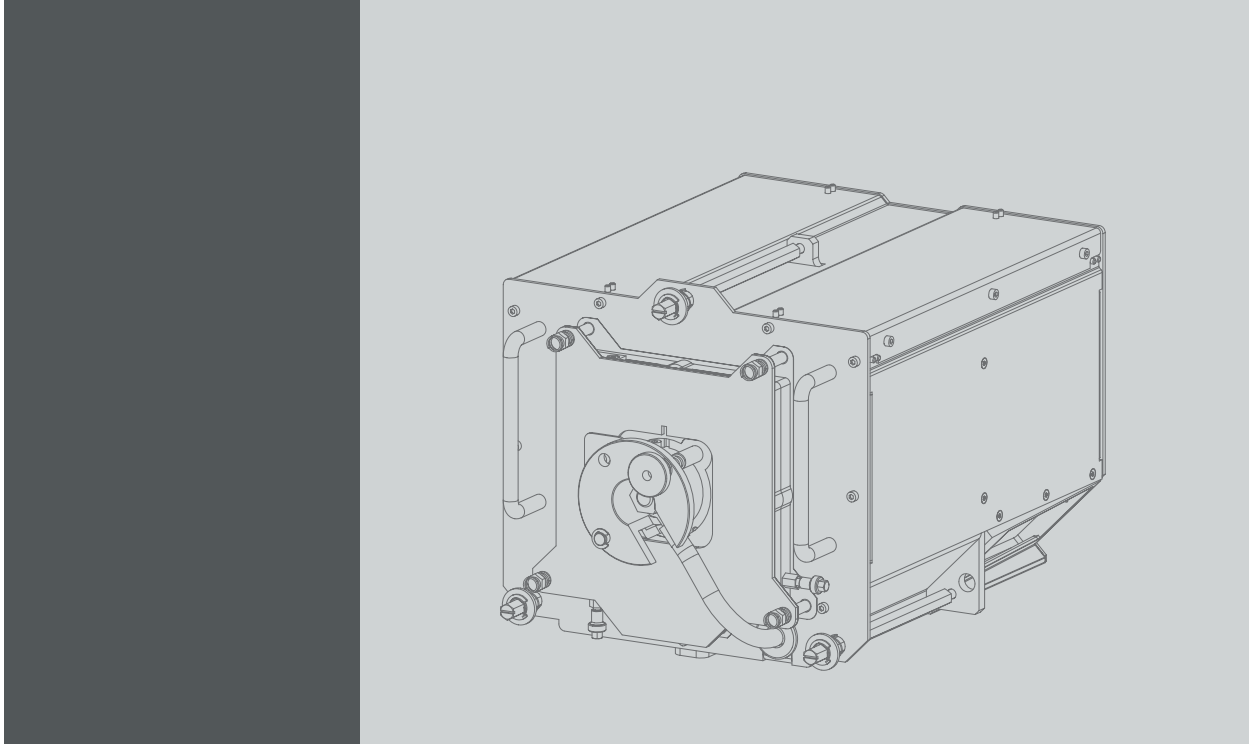


Lamp House with 2.5 kW lamp



Installation manual
For HDX series

R9864130

Barco nv, Events

Noordlaan 5, B-8520 Kuurne

Phone: +32 56.36.82.11

Fax: +32 56.36.88.24

Support: www.barco.com/esupport

Visit us at the web: www.barco.com

Changes

Barco provides this manual 'as is' without warranty of any kind, either expressed or implied, including but not limited to the implied warranties or merchantability and fitness for a particular purpose. Barco may make improvements and/or changes to the product(s) and/or the program(s) described in this publication at any time without notice.

This publication could contain technical inaccuracies or typographical errors. Changes are periodically made to the information in this publication; these changes are incorporated in new editions of this publication.

The latest edition of Barco manuals can be downloaded from the Barco web site www.barco.com or from the secured Barco web site <https://www.barco.com/en/signin>.

Copyright ©

All rights reserved. No part of this document may be copied, reproduced or translated. It shall not otherwise be recorded, transmitted or stored in a retrieval system without the prior written consent of Barco.

Disposal Information

Waste Electrical and Electronic Equipment



■ This symbol on the product indicates that, under the European Directive 2012/19/EU governing waste from electrical and electronic equipment, this product must not be disposed of with other municipal waste. Please dispose of your waste equipment by handing it over to a designated collection point for the recycling of waste electrical and electronic equipment. To prevent possible harm to the environment or human health from uncontrolled waste disposal, please separate these items from other types of waste and recycle them responsibly to promote the sustainable reuse of material resources.

For more information about recycling of this product, please contact your local city office or your municipal waste disposal service.

For details, please visit the Barco website at: <http://www.barco.com/en/AboutBarco/weee>

Trademarks

Brand and product names mentioned in this manual may be trademarks, registered trademarks or copyrights of their respective holders. All brand and product names mentioned in this manual serve as comments or examples and are not to be understood as advertising for the products or their manufacturers.

TABLE OF CONTENTS

1. Lamp House with 2.5 kW lamp	3
1.1 Introduction	3
1.2 Safety	3
2. Lamp and Lamp House	5
2.1 Removal of the Lamp House	5
2.2 Installation of the Lamp House	6
2.3 Realignment of the lamp in the Lamp House	7

1. LAMP HOUSE WITH 2.5 KW LAMP

Purpose of the Lamp House with 2.5 kW lamp

The Lamp House with 2.5 kW lamp is exclusively designed for the Barco HDX series and can thus not be used on any other equipment.

Overview

- Introduction
- Safety

1.1 Introduction

Order info & content of the kit

When ordering the Lamp House with 2.5 kW lamp for HDX series, refer to article number R9864130.

The table below gives an overview of the content of the kit.

Article number	Description	Quantity	Image
R5905109	This installation manual	1	image 1-1
R856950	Lamp House with 2.5 kW lamp	1	image 1-2



Image 1-1

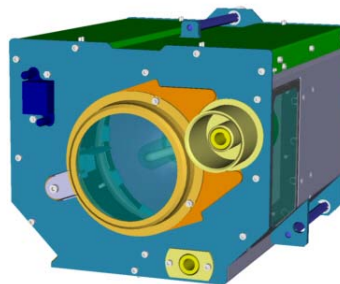


Image 1-2

1.2 Safety

Safety instructions

Read and heed the following warnings and cautions.



WARNING: The procedures below may only be performed by Barco trained and qualified technicians.



WARNING: The projector must be cooled down before removing any of the projector covers: wait for the cool down cycle to finish after switching the projector to standby (the sound of the fans comes to a very low level) and wait for 15 more minutes before starting any of the procedures below.



WARNING: Unplug the mains power supply cord in order to completely cut off the power supply to the projector. Failure to do so can cause serious injury or death.

1. Lamp House with 2.5 kW lamp



CAUTION: Always wear a wrist band which is connected to the ground while handling the electrostatic discharge (ESD) sensitive parts.

2. LAMP AND LAMP HOUSE

About this chapter

This chapter describes how to remove and install the complete Lamp House. Furthermore, instructions on how to align the lamp to maximize the light output are given.

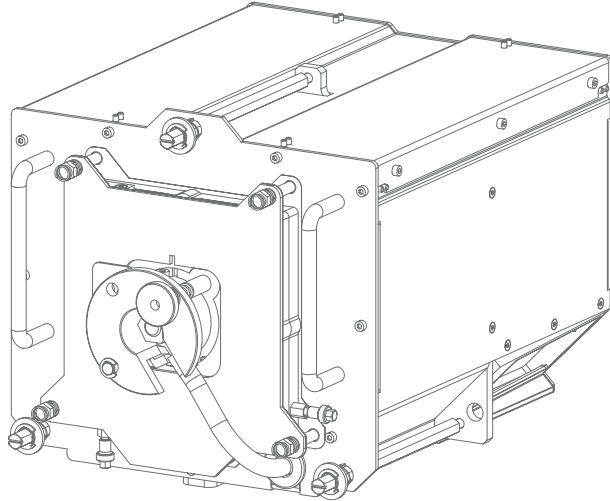


Image 2-1

Overview

- Removal of the Lamp House
- Installation of the Lamp House
- Realignment of the lamp in the Lamp House

2.1 Removal of the Lamp House



WARNING: The procedures below may only be performed by Barco trained and qualified technicians.

Necessary tools

7 mm flat screwdriver

How to remove the Lamp House?

1. Switch off the projector and unplug the power cord at the projector back side.
2. Let the projector cool down for at least 15 minutes before proceeding to the next step.
Warning: *The Lamp House is very hot after operation. Let the projector cool down for at least 15 minutes before proceeding to the next step. Failure to do so can cause serious injury.*
3. Remove the right projector cover. See the installation manual of the projector.
4. Release the 3 captive screws on the Lamp House.

2. Lamp and Lamp House

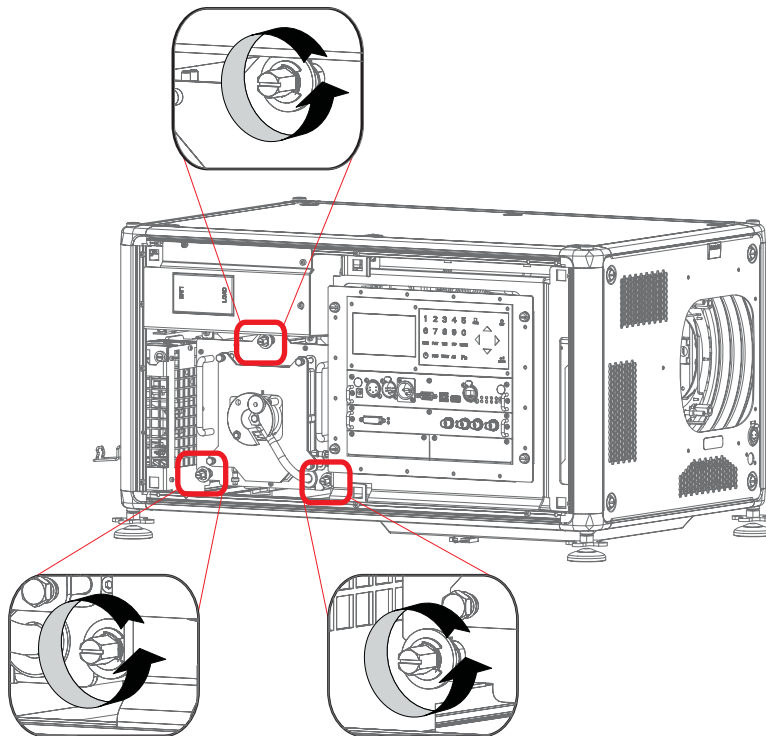


Image 2-2

5. Take the Lamp House by its handles and pull it out of its compartment.

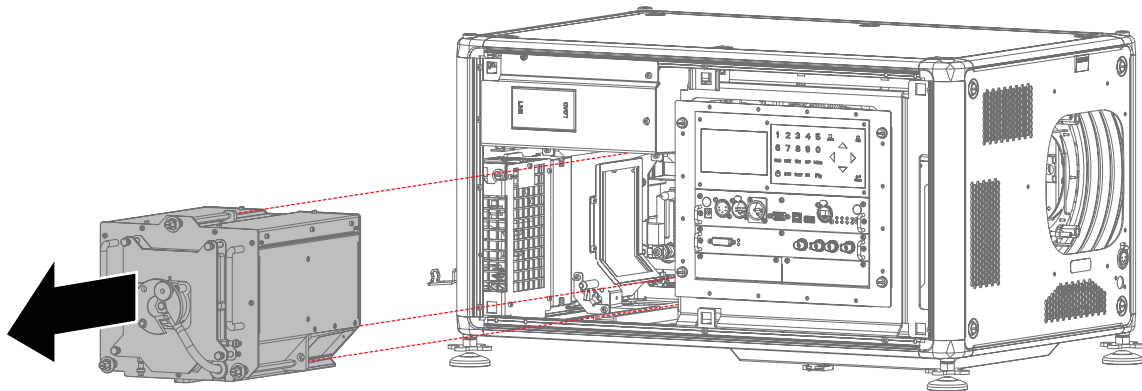


Image 2-3

Note: While starting up the projector, the electronics detect if a Lamp House is installed. If no Lamp House is installed, it is not possible to start up the projector.

2.2 Installation of the Lamp House



WARNING: The procedures below may only be performed by Barco trained and qualified technicians.

Necessary tools

7 mm flat screwdriver

How to install the Lamp House?

1. Take the Lamp House by its handles and gently slide it in its compartment.
Tip: The compartment is provided with a guide to position the Lamp House correctly.
Note: For a new lamp house, remove first the transportation nuts on the captive screws before inserting the lamp house in the compartment.

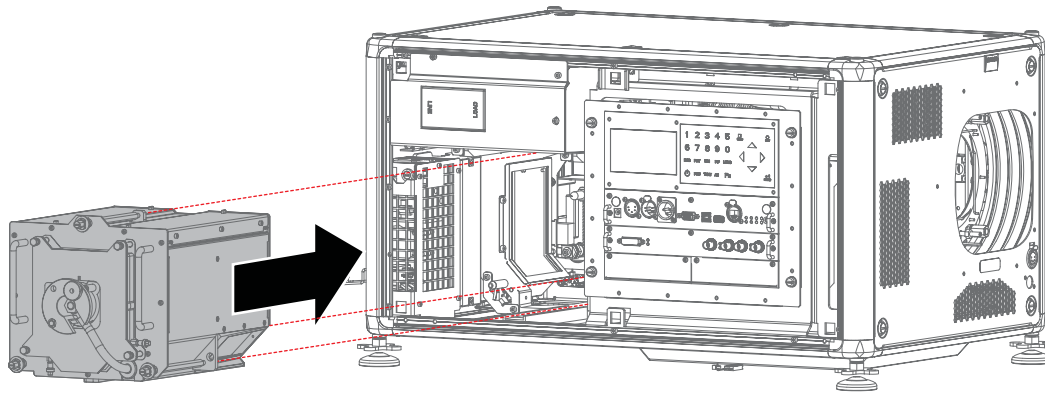


Image 2-4

2. Push the Lamp House forward until it slides fully into the projector. The positioning pins must match the holes in the Lamp House.
3. Secure the 3 captive screws on the Lamp House.

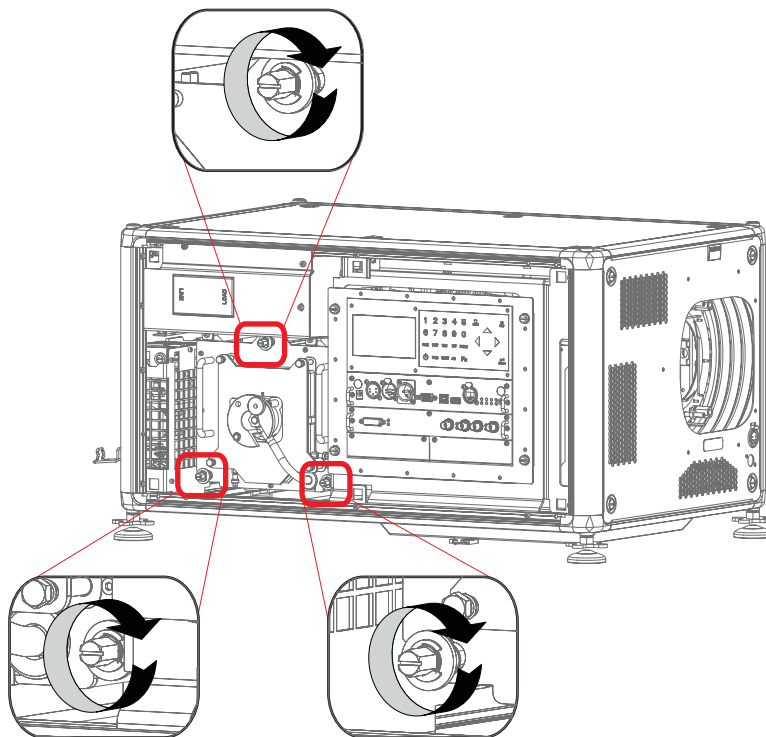


Image 2-5

4. Install the right projector cover. See the installation manual of the projector.
5. Plug in the power cord at the projector back side.
Note: While starting up the projector, the electronics detect if a Lamp House is installed. If no Lamp House is installed, it is not possible to start up the projector.

2.3 Realignment of the lamp in the Lamp House



WARNING: The procedures below may only be performed by Barco trained and qualified technicians.



It is recommended to realign the Z-axis of the lamp after the first run time of 100 and 200 hours.

2. Lamp and Lamp House

Necessary tools

7 mm open-end wrench

How to realign the lamp in the Lamp House?

1. Switch off the projector.
2. Let the projector cool down for at least 15 minutes before proceeding to the next step.
Warning: *The Lamp House is very hot after operation. Let the projector cool down for at least 15 minutes before proceeding to the next step. Failure to do so can cause serious injury.*
3. Remove the right projector cover. See the installation manual of the projector.
4. Switch on the projector and startup the lamp.
5. Press **Menu** to activate the menus and select *Lamp* → *Z-axis*.
6. Press **ENTER** to display the current light output.
7. Release the lock nuts for the X-axis, Y-axis and Z-axis (if applicable).
8. Adjust the X, Y and Z-axis for maximum light output. Carefully turn the thumbscrews in one direction, and once over the maximum, turn slightly in the opposite direction to reach the maximum light output again. Do this for each direction and repeat this adjustment cycle minimum twice.
9. Tighten the lock nuts for the X-axis, Y-axis and Z-axis (if applicable).

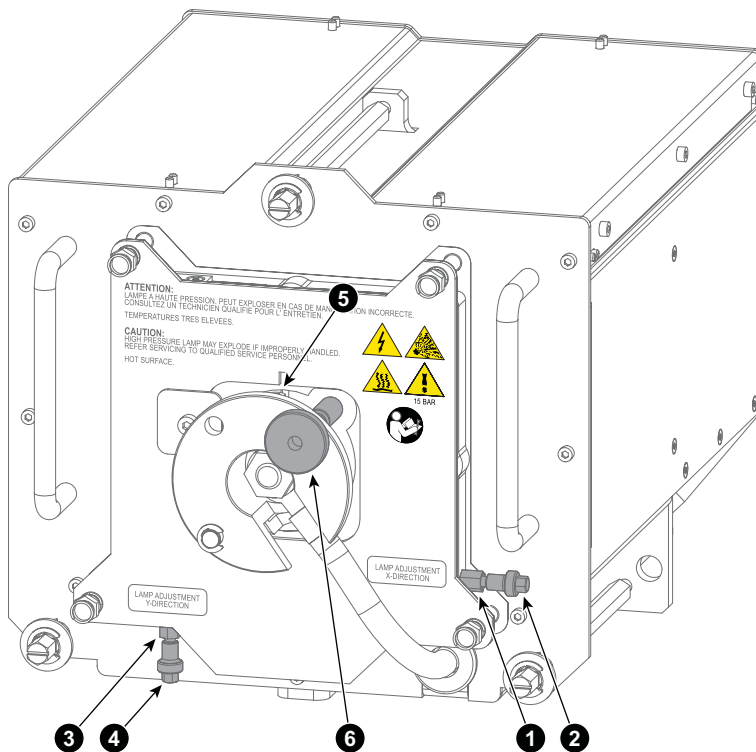


Image 2-6
HDX Lamp House

- 1 X lock
- 2 X adjustment
- 3 Y lock
- 4 Y adjustment
- 5 Z lock (3 mm Allen wrench)
- 6 Z adjustment

10. Switch off the projector.

11. Install the right projector cover. See the installation manual of the projector.