



FA42T-6MB

Strategy Series® II 4" Motor Board Assembly

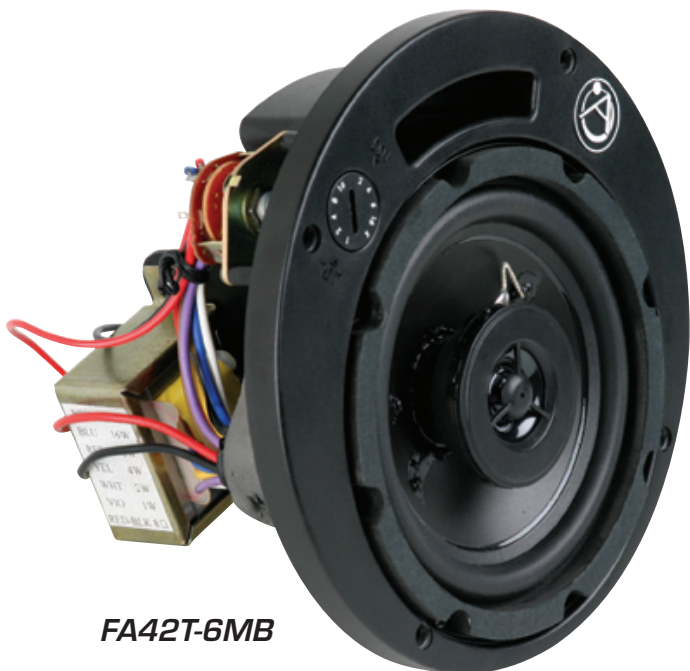
Motorboard Assemblies

Atlas Sound has also addressed retrofit and "division of labor" installations with a new "motorboard" version of the Strategy Series® II. Model FA42T-6MB is comprised of a 4" speaker with transformer, selector switch, and front plate. The footprint of the FA42T-6MB is identical to a standard FA Series 6" speaker component, which allows the motorboard to fit into all current Strategy Series® 6" enclosures in the exact manor as a regular FA speaker. Front mounted tap selector switch for easy system tuning adjustments includes transformer bypass setting for 8Ω / direct coupled operation.

Architects & Engineers Specifications

System shall include a high performance 4" coaxial loudspeaker and tap selector switch mounted to a ported mounting plate appropriately sized to match Atlas Sound FA95-6, FA97-6 enclosures.

When used with the FA97-6 enclosure frequency response for the system shall be 75Hz – 20kHz (±7dB). Sensitivity shall be 88dB average. Loudspeaker shall be comprised of a 4" coaxial cone type driver. Cone shall be constructed of polypropylene with a butyl rubber surround. The 19mm tweeter shall be constructed of PEI. Magnet shall be a minimum of 10oz (264g) and the voice coil diameter shall be 1" (25mm). Transformer shall be 70.7V / 100V type with 1, 2, 4, 8, and 16 watt primary taps (@70.7V). 12" stripped and tinned wiring pigtailed shall be terminated to the tap selector switch for convenient hook-up. The motorboard assembly shall be the Atlas Sound FA42T-6MB.



FA42T-6MB

Specifications

Power Rating	25 Watts
Transformer Taps at 70.7V	1, 2, 4, 8, & 16 Watts
Frequency Response	75Hz – 20kHz (±7dB) <i>*In FA97-6 Enclosure</i>
Sensitivity (1W / 1M)	88dB
Woofer	4" Poly Cone with Butyl Rubber Surround
Woofer Magnet Weight	10oz (264g)
HF Driver	Coaxially Mounted PEI Dome Tweeter
Matches Enclosures	FA95-6, FA97-6

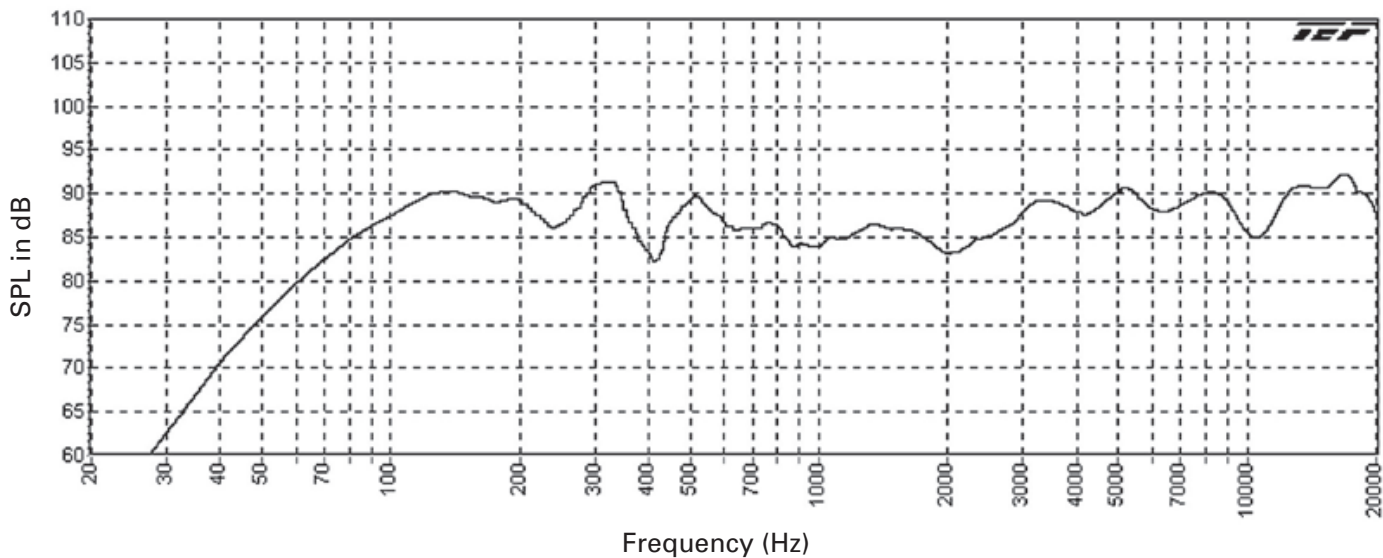


FA42T-6MB

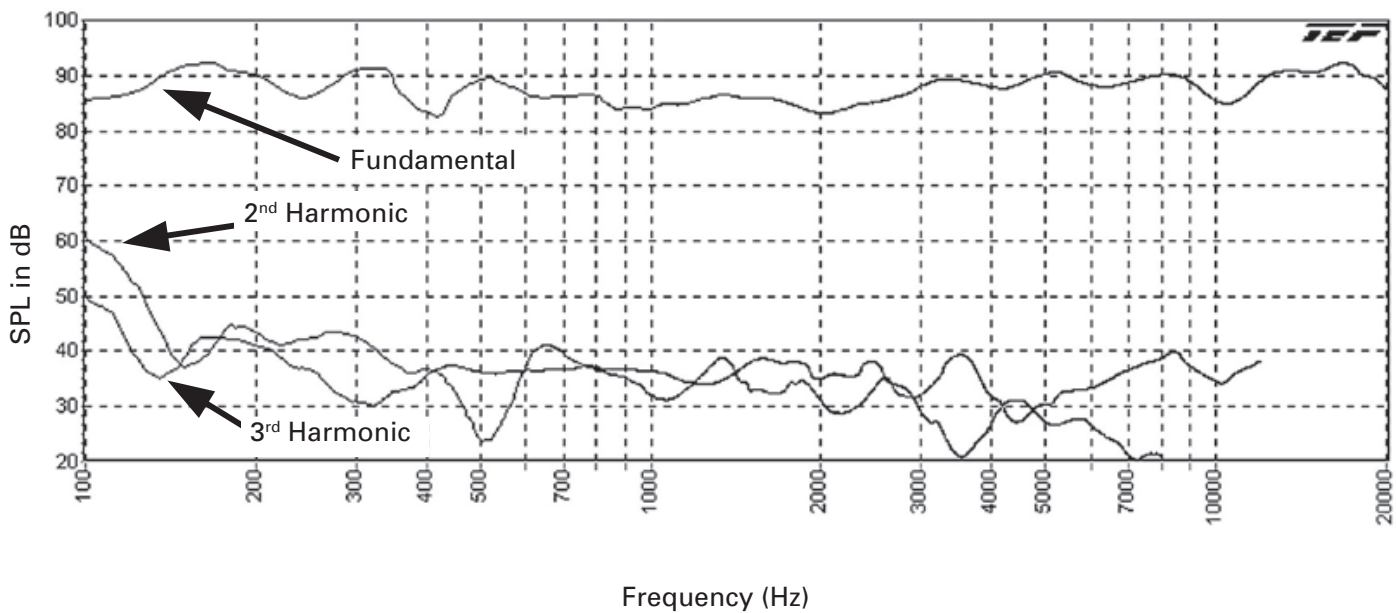
*Shown in FA97-6 Enclosure,
with FA720-6 Grille,
and FA81-6 Tile Bridge*

©2008 Atlas Sound L.P. All rights reserved. Atlas Sound and Strategy Series are trademarks of Atlas Sound L.P. All other trademarks are property of their respective owners. AT5003237 RevB 11/08

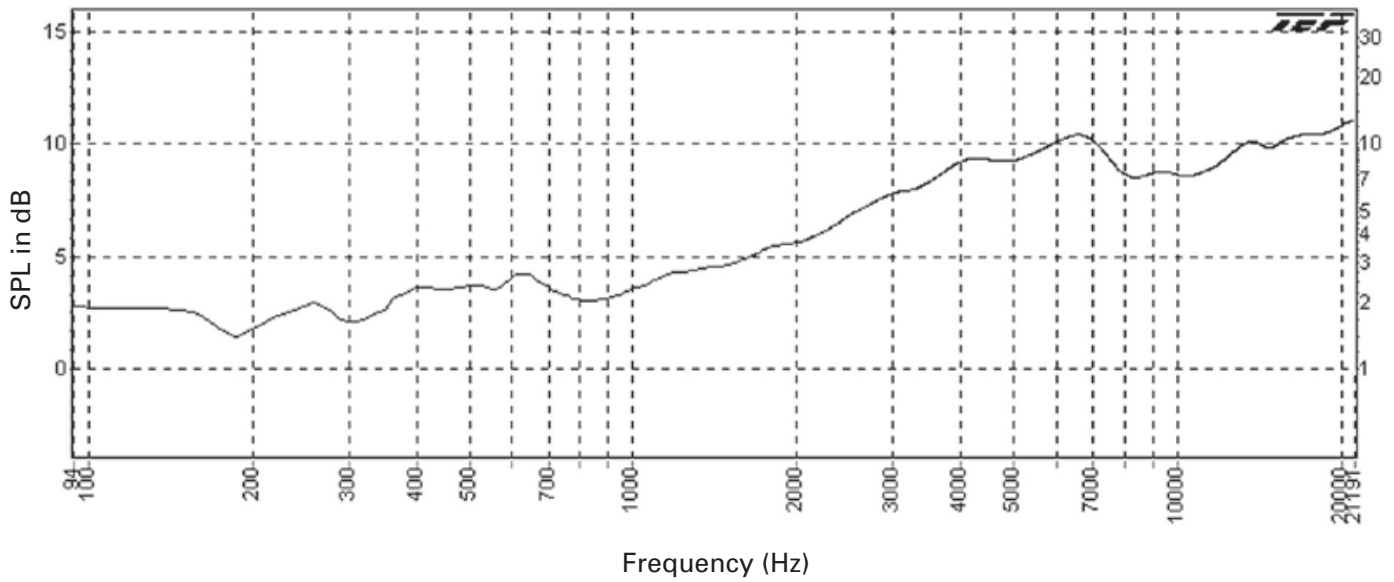
FA42T-6MB^{1/2} Space Frequency Response



FA42T-6MB Harmonic Distortion



FA42T-6MB Directivity vs Frequency



FA42T-6MB Polars (Normalized to Zero on Axis) (-6 dB)

