

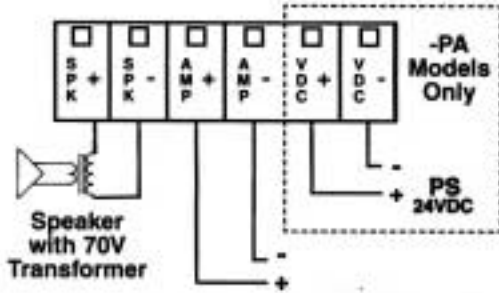


WIRING

Each terminal will hold up to 2-16AWG stranded wire. For larger wires or home run situations, a small length of wire and a wire nut are recommended.

Attach wire according to label on terminal block as shown to the right (Non-PA Models will not have the "VDC+" and "VDC-" terminals).

*Install the unit with the terminal block on top. This will ensure that the OFF position is in the bottom.



AT10 (dc) (-PA) (-RM)
AT35 (dc) (-PA) (-RM)
AT100 (dc) (-PA) (-RM)

Faceplate Options:

d = D - Decora Style Faceplate
c = I - Ivory Color
W - White Color

If there is not the above 2 letter suffix, the attenuator is shipped with the standard stainless steel faceplate or is the RM version without a faceplate.

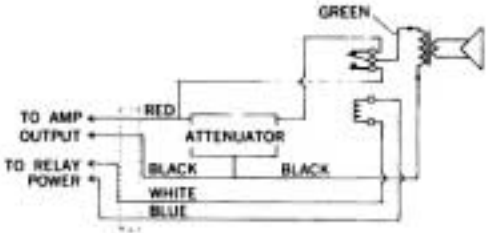
(-RM)
Rack Mount Option

(-PA)
Priority Announce Circuit Option

INSTALLATION MUST BE MADE BY QUALIFIED SERVICE PERSONNEL, AND MEET ALL LOCAL CODES.

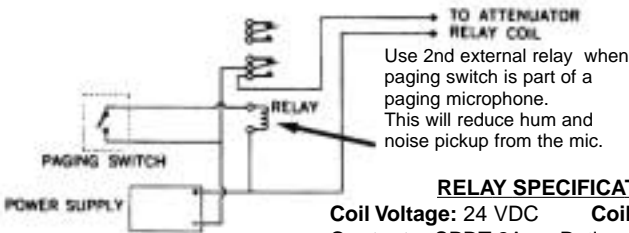
(-PA) PRIORITY ATTENUATORS

SCHEMATICS FOR PRIORITY ATTENUATORS



WIRING REQUIREMENTS: (1) PAIR FOR AUDIO, (1) PAIR FOR RELAY

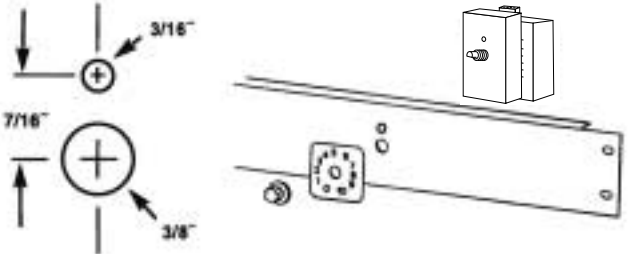
POWER SWITCHING REQ. FOR -PA ATTENUATORS



RELAY SPECIFICATIONS:
Coil Voltage: 24 VDC Coil Current: 10MA
Contacts: SPDT-2Amp Rating
Relay has a protective cover.

(-RM) RACK MOUNT

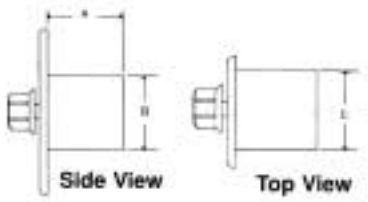
Drill holes in panel using the template to the right. Peel off adhesive backing on escutcheon overlay. Align hole openings with holes in panel and affix to surface. Remove knob and nut from attenuator. Insert bushing through large hole in panel making sure that the small indentation on the bracket lines up with the small hole in the panel. Fasten attenuator to panel with the nut. Fit attenuator knob on shaft. Tighten screw on knob to secure.



DIMENSIONAL SPECIFICATIONS

-RM Models supplied without a faceplate. All other models supplied with a single faceplate. Double gang stainless steel faceplate can be ordered separately.

MODEL	A	B	C
AT10	2 1/8" (54mm)	2 3/4" (70mm)	1 3/4" (45mm)
AT35	2 1/8" (54mm)	2 3/4" (70mm)	1 3/4" (45mm)
AT100	2 1/2" (64mm)	2 3/4" (70mm)	1 3/4" (45mm)



Specifications are subject to change without notice



AtlasSound.com

1601 JACK MCKAY BOULEVARD ENNIS, TEXAS 75119 U.S.A. • TELEPHONE: (800) 876-3332 • FAX: (800) 765-3435

©2002 ATLAS SOUND LP PRINTED IN CHINA 00302 PP ATS001062 RevB 03/02