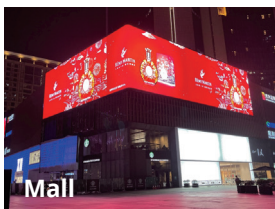


AW Series

Fine pixel pitch LED display

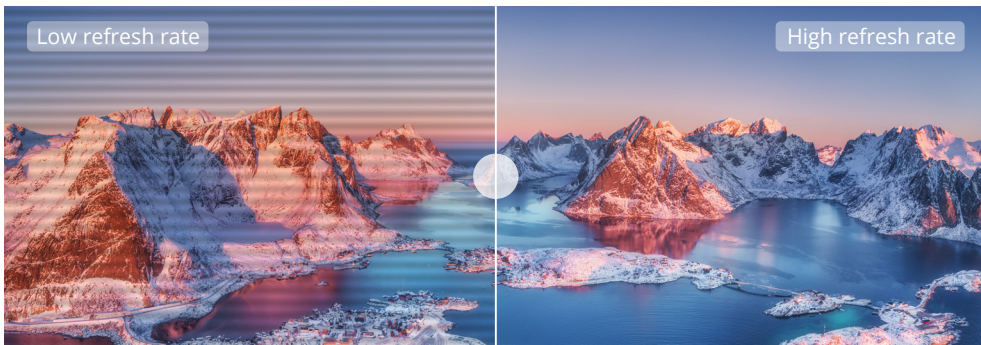


Applications



Exquisite picture quality offering shocking visual experiences

AW2.5 has a pixel density of up to 160,000dots/m², which provides an exquisite visual experience free of non-granular effects, even when inspected outdoors at an ultra-close distance. Its high refresh rate, high gray scale, high contrast, & excellent color processing capability ensure a smooth and delicate picture quality & great photographic effects.



-  4500-5000nit Brightness
-  15-16bit Gray Scale
-  ≥3840 Hz Refresh Rate
-  3200~3600: 1 Contrast Ratio

Fully water resistant panel that performs impeccably in all kinds of extreme weather

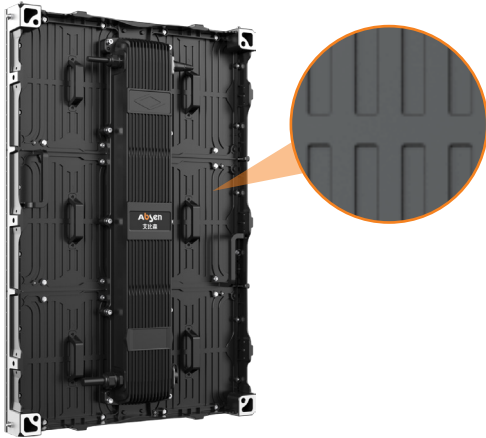


IP65 protection rating enables installation in uncovered outdoor locations and performance through extreme outdoor weather conditions

-  Typhoon resistance
-  Storm resistance
-  Humidity resistance
-  High temperature resistance
-  Low temperature resistance
-  Salt fog resistance

Efficient heat dissipation prolongs a great service life

An aluminum panel is used for fast conduction heat dissipation and a fin heat dissipation design increases the surface area for rapid convection heat dissipation. This prolongs the service life of internal parts and components.



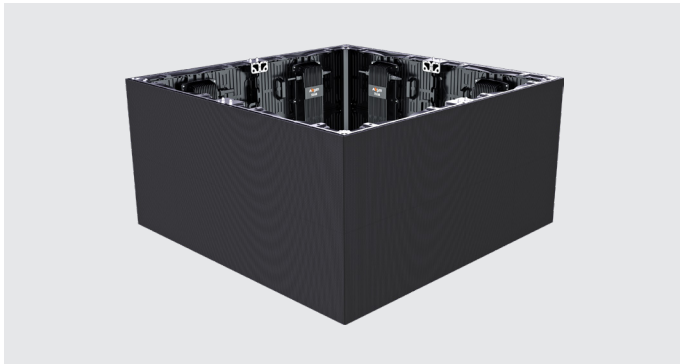
Thin & light die casting panel, less installation space & easy maintenance

- Quick and easy maintenance can be performed through the front of the module and rear of the power supply box
- Ultra-thin wall-mounted, space-saving panel



 **25.6**
kg/m²

Suitable for right Angle stitching application, bring higher commercial value



It can be adjusted to a right Angle splicing according to the building structure, bringing a stunning visual effect of 90° corner



Perfect matching naked eye 3D creative visual effect, enabling creative marketing value maximization

Parameters

Item	AW2.5	AW2.8	AW3.9
Pixel Pitch(mm)	2.5	2.84	3.9
Brightness(nits)	4500	5000	5000
Refresh Rate(Hz)	3840	4800	3840
Gray Scale (Bit)	15	15	16
Power Consumption (Max/Ave)(W/m ²)	660 / 220	660 / 220	630 / 210
Visual angle (H/V)(°)	160/160	160/160	160/125
Panel size (W*H*D) (mm)	500*500/500*750 *83	500*500/500*750 *83	500*500/500*750 *83
Module size (W*H*D)(mm)	250*250	250*250	250*250
Panel weight (kg)	6.4/9.6	6.4/9.6	6.4/9.6
Panel material	Aluminum		
Operation temperature	-20 °C ~ +50 °C		
IP Rating (front/rear)	IP65/IP54		

Absen Optoelectronic Co.,Ltd

Address: 18-20F Building 3A, Cloud Park, Bantian Huawei Base,
Longgang District Shenzhen, 518129, P.R.China TEL: +86-755-89747399
FAX: +86-755-89747599 E-mail: absen@absen.com Website: www.absen.com



Twitter: @LEDAbsen Facebook: @LEDAbsen
LinkedIn: Absen Instagram: absenled