

# **Absenicon**

## **X-Series Ultrawide Screen User**


### **Manual**



## Catalogue



Safety Information .....	3
1. Product Presentation .....	6
1.1 Main characteristics of products .....	7
1.2 Product Specification .....	8
1.3 Screen body size drawing (mm) .....	10
1.3.1 X151 Screen Body Size Drawing (mm) .....	10
1.3.2 X178 screen body size drawing (mm) .....	10
1.3.3 X205 Screen body size drawing (mm) .....	11
1.4 Standard packaging .....	13
1.4.1 X151 standard packaging .....	13
1.4.2 X178 standard packaging .....	13
1.4.3 X205 standard packaging .....	14
2. Product Installation .....	15
2.1 Installation Instructions .....	15
2.2 X151 Wall Mount Version Installation .....	15
2.3 X178 Wall Mount Version Installation .....	21
2.4 X205 Wall Mount Version Installation .....	27
3. Product Maintenance .....	33
3.1 Tool Preparation .....	33
3.2 Maintenance Instructions .....	33
4. Handling of common problems .....	- 31 -

## Safety Information



**WARNING!**  
Please read the safety measures listed in this section carefully before installing, powering on, operating, or doing maintenance on this product.

The following marks on the product and in this manual indicate important safety measures.

					
<b>WARNING!</b> Safety risk! Might cause equipment damage or safety risk.	<b>WARNING!</b> Please read the manual before operating.	<b>WARNING!</b> Dangerous voltage! Might cause equipment damage or electric shock.	<b>WARNING!</b> Hot surface! Do not touch.	<b>WARNING!</b> Flammable!	<b>WARNING!</b> Possible damage to eyes.



**WARNING:** Be sure to understand and follow all safety guidelines, safety instructions, warnings and precautions listed in this manual.

This product is for professional use only!

This product may result in serious injury or death due to fire hazard, electric shock, and crushing hazard.



Please read this manual carefully before installing, powering up, operating and maintenance of this product.

Follow safety instructions in this manual and on the product. If you have any questions, please seek help from Absen.



**Beware of Electric Shock!**

- To prevent electric shock the device must be properly grounded during installation, Do not ignore using the grounding plug, or else there is a risk of electric shock.
- During a lightning storm, please disconnect the device's power supply, or provide other suitable lightning protection. If the equipment is not in use for a long time, please unplug the power cord.
- When performing any installation or maintenance work (e.g. removing the fuses, etc.,) make sure to turn off the master switch.
- Disconnect AC power when the product is not in use, or before disassembling, or installing the product.

- The AC power used in this product must comply with local building and electric codes, and should be equipped with overload and ground fault protection.
- The main power switch should be installed at a location near the product and should be clearly visible and easily reached. This way in case of any failure the power can be promptly disconnected.
- Before using this product check all electrical distribution equipment, cables and all connected devices, and make sure all meet current requirements.
- Use appropriate power cords. Please select the appropriate power cord according to the required power and current capacity, and ensure the power cord is not damaged, aged or wet. If any overheating occurs, replace power cord immediately.
- For any other questions, please consult a professional.

#### Beware of Fire!



- Use a circuit breaker or fuse protection to avoid fire caused by power supply cables overloading.
- Maintain good ventilation around the display screen, controller, power supply and other devices, and keep a minimum 0.1 meter gap with other objects.
- Do not stick or hang anything on the screen.
- Do not modify the product, do not add or remove parts.
- Do not use the product in case ambient temperature is over 55 °C.

#### Beware of Injury!



- Warning: Wear a helmet to avoid injury.
- Ensure any structures used to support, fix and connect the equipment can withstand at least 10 times the weight of all the equipment.
- When stacking products, please hold products firmly to prevent tipping or falling.
- Ensure all components and steel frames are securely installed.
- When installing, repairing, or moving the product, ensure the working area is free of obstacles, and ensure the working platform is securely and stably fixed.
- In the absence of proper eye protection, please do not look directly at the lit screen from within a 1 meter distance.
- Do not use any optical devices that have converging

functions to look at the screen to avoid burning the eyes.



#### Product Disposal

- Any component that has a recycling bin label can be recycled.
- For more information on collecting, reusing and recycling, please contact the local or regional waste management unit.
- Please contact us directly for detailed environmental performance information.



WARNING: Beware of suspended loads.



LED lamps used in the module are sensitive and can be damaged by ESD (electrostatic discharge). To prevent damage to LED lamps, do not touch when the device is running or switched off.



WARNING: The manufacturer shall not bear any responsibility for any incorrect, inappropriate, irresponsible or unsafe system installation.

# 1. Product Presentation

Absenicon X Series widescreen is an ultra-high-definition micro-pitch intelligent display terminal created by Absenon based on Micro LED display technology. Available in 151", 178" and 205" screen sizes, the series is suitable for displaying on-screen content in a 21:9 ratio for a more natural and efficient hybrid meeting experience. Suitable for video conferencing, board meetings, online education and other scenarios, as well as with video collaboration platforms such as Microsoft Teams® and zoom.

The appearance of Absenicon X-series Ultrawide screen will create a bright, open, efficient and intelligent conference environment, which can enhance the audience's attention, strengthen the influence of speech, and improve the efficiency of the conference.

Absenicon C-series Ultrawide screen will give a different large -screen visual experience to users in conference room, which can project the content of the speaker's intelligent terminal to the conference screen in real time, without complex cable connection, and easily realize the wireless projection of Windows, Mac OS, iOS and Android multi-platform terminals. In addition, for different conference application scenarios, four modes are provided, so that the document demonstration, video playback, remote meeting, can achieve the best display effect. The functions of mode switching and fast screen casting of maximum four split-screen can meet the applications of various scenarios of the conference, and is widely used in the commercial conference scenarios of government and enterprise, design, medical care, education and other industries. The unique personalized split screen mode can present a variety of display layouts to meet the needs of full screen, split screen, auxiliary split screen.

## 1.1 Main characteristics of products

### 1、Micro LED display technology to real picture quality experience

Absenicon X series widescreen products use flip COB packaging technology and Micro LED display technology, compared with traditional SMD display, all-round improve the display effect, with 15,000: 1 contrast, color gamut is 90% BT2020 film breadth, with  $\geq 3840$  refresh rate and 14 bit gray scale level, more accurately restore corporate logo, brand identity and color scheme. With a high brightness of 600nits, the content is clearly visible in any environment without dimming the room lights.

### 2、Ultrawide screen and multi-content make presentation more flexible

Absenicon C-series Ultrawide screen expands the view on horizontal way. It has 33% more space screen than traditional 16:9 LED screen, which means it can display more windows, group tasks, and other contents. The product is not only especially suitable for remote video conferencing, but also suitable for full-screen display of 2.35:1 wide screen films because it can avoid the appearance of black edges to give a wider view to the audience.

### 3、Highly integrated design, easy to use

Absenicon X-series Ultrawide screen adopts highly integrated design, including Android 11.0 control system, LED module, box, edge, Wall mounting bracket, wires and all other necessary screen installation structures, which make the installation and usage become easy.

### 4、Ultra-high screen ratio of immersive vision

There is no splicing gap between the box and no frame-lines inside the screen, showing the aesthetics of science and technology. The screen can blend into background with 5mm ultra-narrow frame and 97% screen-to-body ration to bring audiences to a more immersive viewing experience.

### 5、Whole screen correction and excellent picture consistency

Calibrating the whole screen before leaving the factory uniforms the screen brightness and color, which can eliminate the phenomenon of Mosaic, bright / dark lines, uneven modularity and others.

### 6、Low blue light eye protection is ergonomic

21:9 widescreen ratio is close to the human eye viewing field, ergonomic, and has low blue light certification, prolonged viewing time without fatigue.

### 7、Remote control interface is simple and easy to use

Remote control enables switching, brightness / color temperature adjustment, content switching, page turning and other functions; the remote control adopts infrared and Bluetooth dual signal transmission mode, the maximum remote distance can reach 20m.

Compatible with the mainstream central control system: it can be integrated with the central control equipment such as Crestron and Extron by providing the network control protocol to quickly build a professional conference ecological environment, to achieve centralized control, and greatly improve the efficiency of business management

### 8、Wireless screen projection of a variety of split screen modes

Screen projection: the laptop screen is immediately shared to the large screen through the screen projection. PPT, pictures and other documents are easily projected too, which makes work report faster.

Wireless flash cast and multi-device screen projection: support computer, mobile phone, tablet and other device; support full screen, two split screen, four split screen and other screen projection modes to present more content and get efficient meeting decision.

### 9、Split screen mode supports a variety of display layouts

Through innovative system UI design, Absenicon X Series widescreen enables the screen to present a variety of screen layouts, including full screen mode, standard split screen mode, left and right split screen mode and auxiliary split screen mode. Two external signal sources can be input at the same time, which is displayed on the left and right sides of the screen. You can also insert the clock and weather plug-in under the external signal source to meet personalized display requirements.

### 10、Intelligent system massive applications download

Absenicon X series is standard with Android 11.0 system, 4GB+32GB large memory, compatible with more software, to meet more needs. At the same time support 2.4GHz/5GHz dual-band wireless signal, the signal is smooth without delay, you can surf the Internet while casting the screen.

### 11、Convenient installation and maintenance, easy transportation and entry

Absenicon C-series Ultrawide screen adopts the vertical large box module design, which can easily enter the gate and elevator and quick installation. LED module, power supply, receiving card and others all can be maintenance in front of screen. Equipped with special maintenance tools to achieve rapid disassembly.

## 1.2 Product Specification

project	model	Absenicon X151	Absenicon X178	Absenicon X205
Physical parameter	Led type	Micro LED		
	Size (inch)	151	178	205
	Pixel Pitch (mm)	1.25	1.56	1.87
	Display area (mm)	3600×1350	4200*1687.5	4800*2025
	Overall machine size (mm)	3610×1395×39.3	4210*1732.5*39.3	4810*2070*39.3
	Package size (mm)	950*765*1692 966*674*837	987*745*1785mm 987*745*1415mm	1100*752*1736mm 1044*745*1551
	Net Weight (kg)	130	178.5	237.8
	Display Weight (kg) (Including frame and rim)	wall mounting		
Display parameter	resolution ratio (Dots)	2880*1080	2688*1080	2560*1080
	Maximum Brightness (nit)	600		
	Contrast Ratio	15000:1		

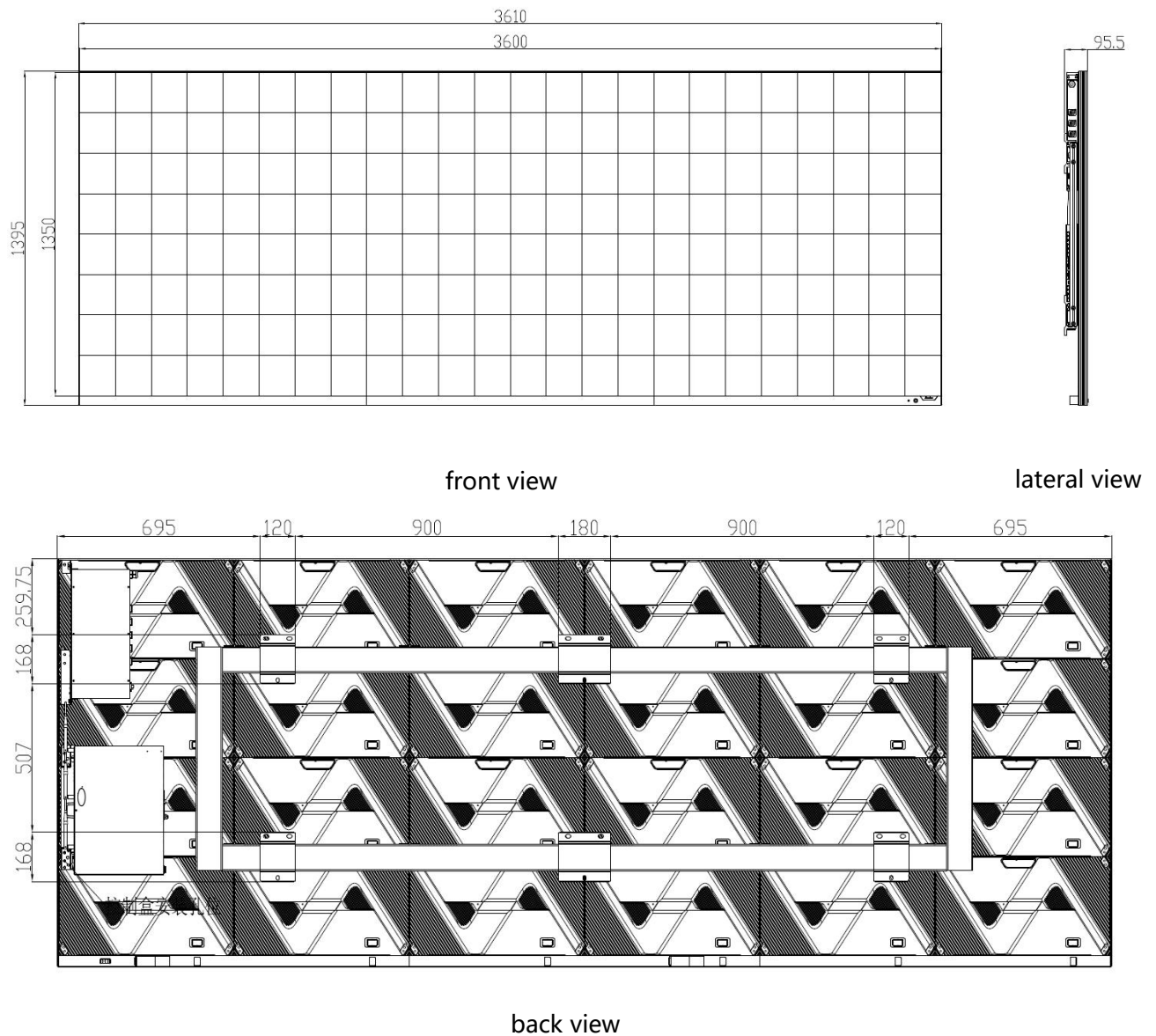


	Gray scale (Bit)	14	13	13
	Refresh Rate (Hz)	3840		
	Viewing Angle(H/V) (°)	160/160		
<b>Electric parameter</b>	AC Operating Voltage (V)	AC 100~240		
	mean power (W)	500	700	900
	maximum power (W)	1500	2100	2700
<b>System parameter</b>	Android system	Android11.0		
	Wifi	Support WiFi 6.0		
	Bluetooth	Support Bluetooth 5.0		
	CPU	64-bit quad-core 1.8 GHz CPU		
	System memory	4GB		
	Storage	32GB		
	control interface	RJ45 (Network and control sharing) , RS232		
	Input/output interface	HDMI1.4 IN*2, HDMI LOOP*1, HDMI1.4 OUT*1 USB2.0*4, RJ45*1, Audio OUT*1, SPDIF OUT*1		
<b>Application parameter</b>	Operating Temperature (°C)	-10°C ~ 40°C		
	Operating Humidity (RH)	10 ~ 80%RH		
	Storage Temperature (°C)	-40°C ~ 60°C		
	Storage Humidity (RH)	10% ~ 85%		
	IP Rating (Front/Rear)	IP40/IP21		
	Maintenance	Front		
	Certificate	CCC,CE,FCC,ETL		

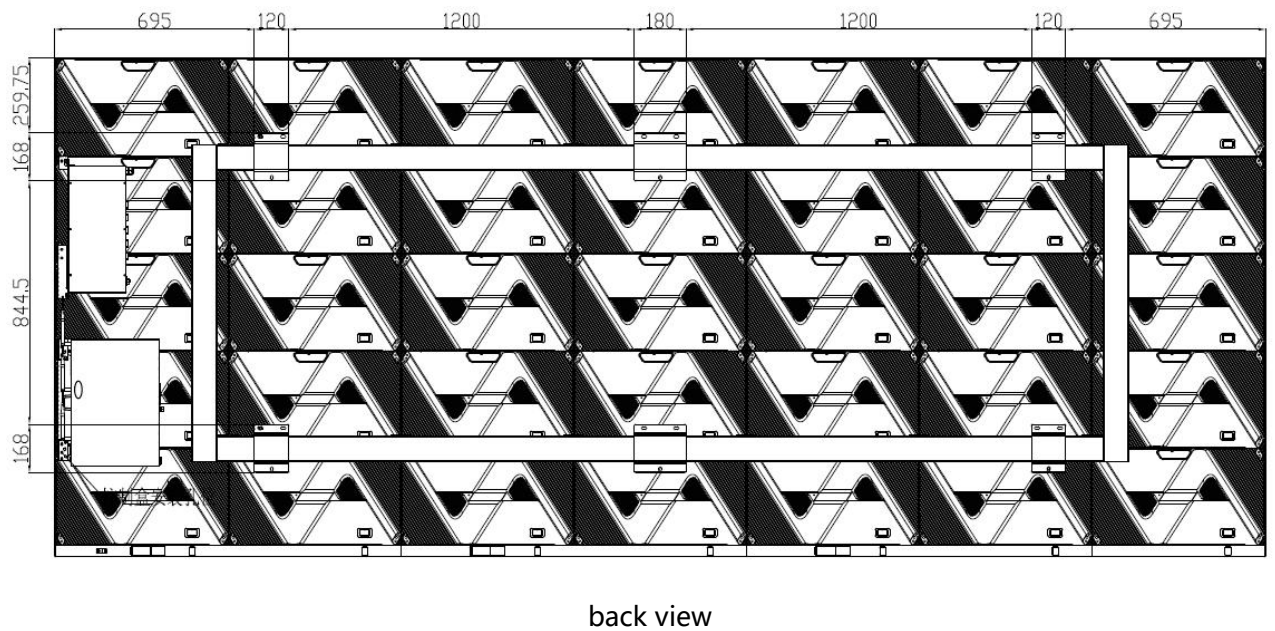
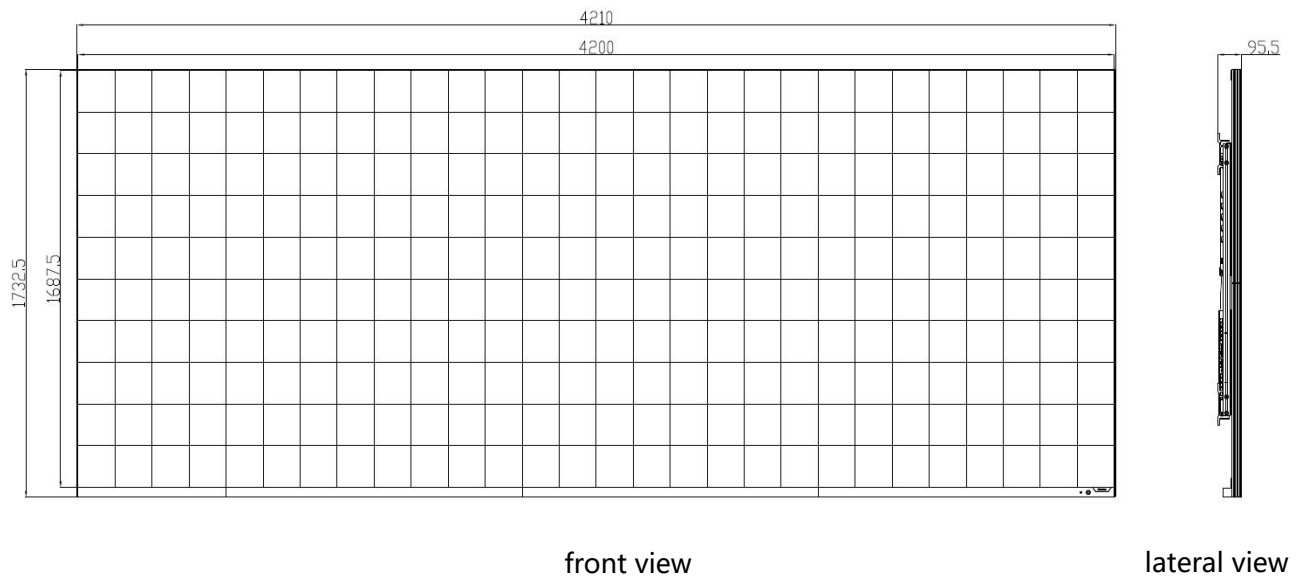
NOTE: POWER WILL FLUCTUATE WITHIN  $\pm 15\%$ , DEPENDING ON THE BRIGHTNESS OF DIFFERENT BATCHES OF LIGHTS, SUBJECT TO ACTUAL CONDITIONS.

### 1.3 Screen body size drawing (mm)

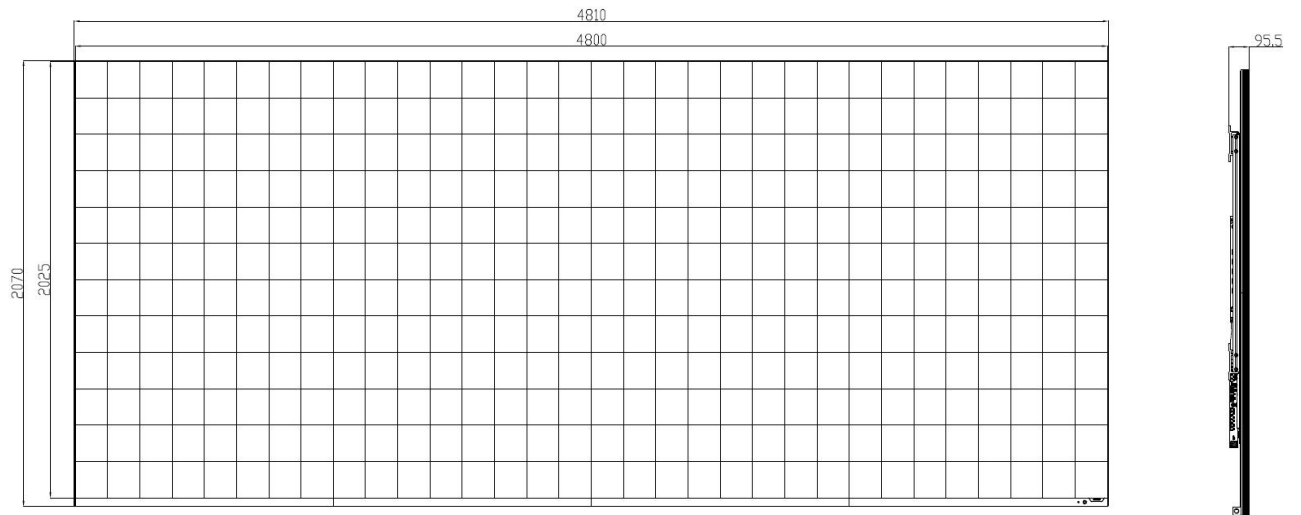
#### 1.3.1 X151 Screen Body Size Drawing (mm)



#### 1.3.2 X178 screen body size drawing (mm)

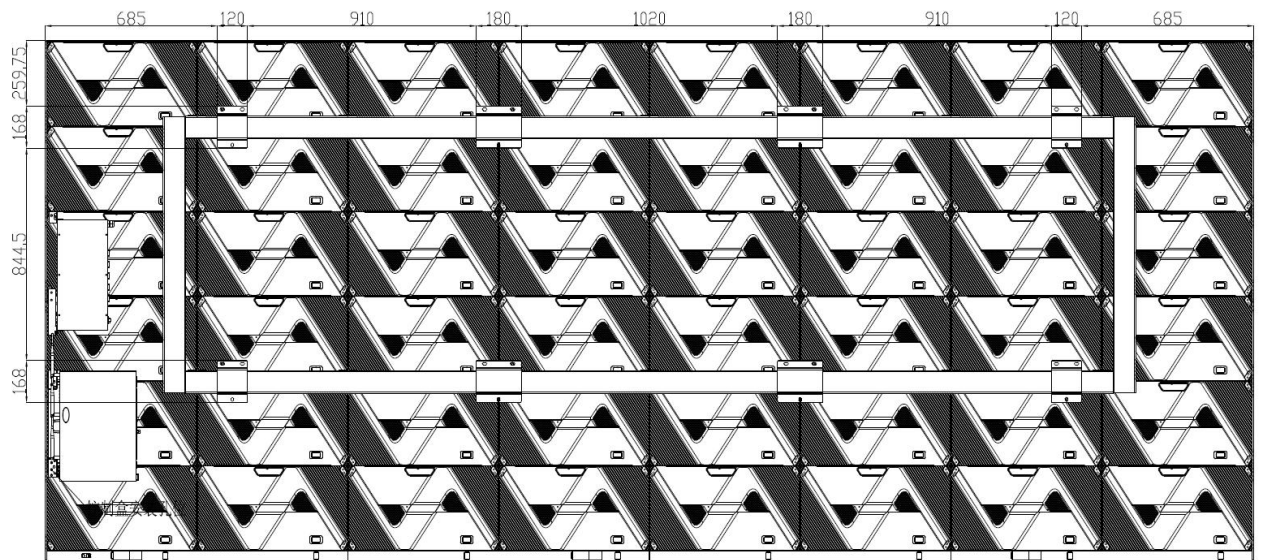


### 1.3.3 X205 Screen body size drawing (mm)



front view

lateral view

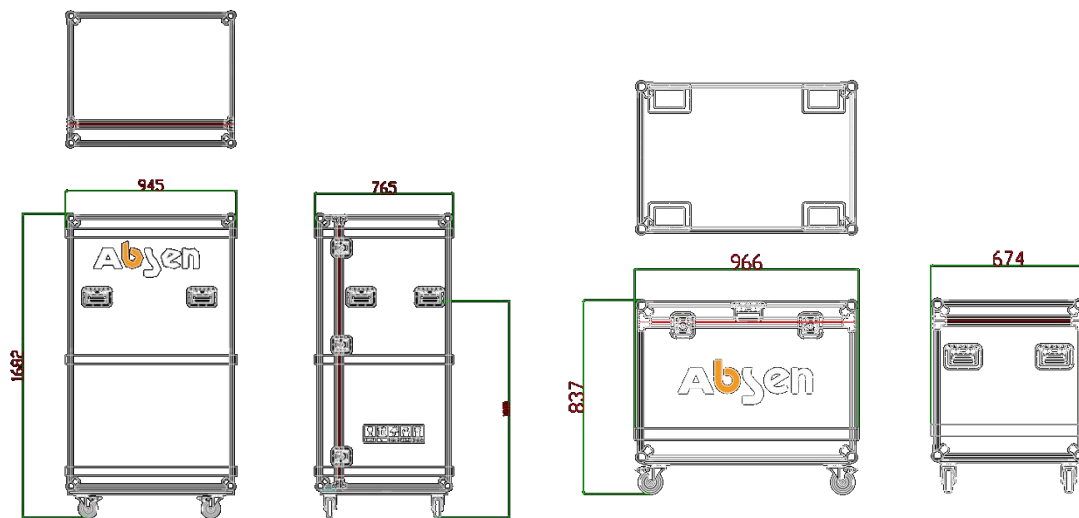


back view

## 1.4 Standard packaging

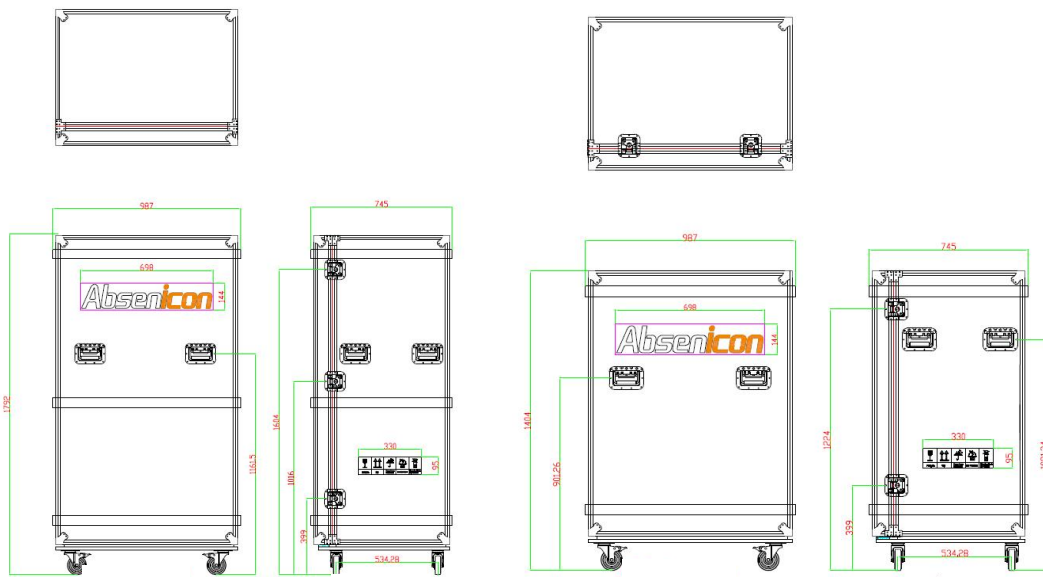
### 1.4.1 X151 standard packaging

- X151 is mainly packed in two flight case
- Case No. 1 includes unmodular case, edge wrapping, control case and wall hanger. The specifications and dimensions are 950\*765\*1692mm
- Case No. 2 contains modules, wires, sequers, installation tools and spare parts. The dimensions are 966\*674\*837mm



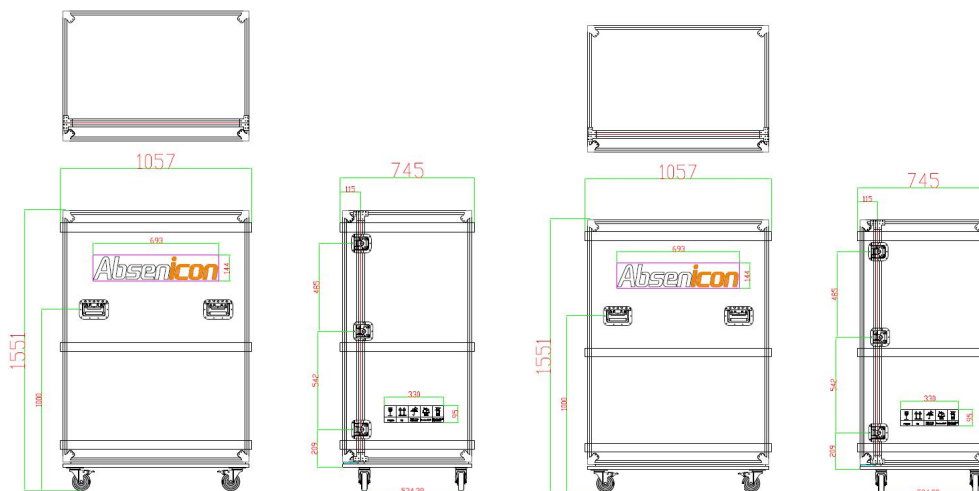
### 1.4.2 X178 standard packaging

- X178 is mainly packed in two flight case
- No. 1 aviation case includes a modular box, wrapped edge, wall hanger, the size of 987\*745\*1785mm
- No. 2 aviation case includes module, wire, sequencer, control box, installation tools, spare parts, the size of 987\*745\*1415mm



### 1.4.3 X205 standard packaging

- X178 is mainly packed in two flight case
- Case No. 1 contains unmodular case, fitting tool, control case and spare parts. The dimensions are 987\*745\*1785mm
- Case No. 2 includes module, wire, wrapping, sequencer and wall hanger. The specifications and dimensions are 987\*745\*1415mm





## 2. Product Installation

This product only supports wall mounting

Suggested thickness from the wall: 40 mm for the screen body, 51 mm for the wall bracket plus the corner code, at least 96 mm is recommended.

### 2.1 Installation Instructions

This product adopts the whole machine calibration, in order to ensure the best display effect, it is recommended to install according to our company logo sequence number.

Installation numbering schematic (front view):

	第1列箱体灯板校正编码	第2列箱体灯板校正编码	第3列箱体灯板校正编码	第4列箱体灯板校正编码	第5列箱体灯板校正编码	第6列箱体灯板校正编码
第1行	1-1-1 1-1-2 1-1-3 1-1-4	1-1-2 1-1-2 1-1-2 1-1-2	1-1-3 1-1-3 1-1-3 1-1-3	1-1-4 1-1-4 1-1-4 1-1-4	1-1-5 1-1-5 1-1-5 1-1-5	1-1-6 1-1-6 1-1-6 1-1-6
第2行	1-2-1 1-2-2 1-2-3 1-2-4	1-2-2 1-2-2 1-2-2 1-2-2	1-2-3 1-2-3 1-2-3 1-2-3	1-2-4 1-2-4 1-2-4 1-2-4	1-2-5 1-2-5 1-2-5 1-2-5	1-2-6 1-2-6 1-2-6 1-2-6
第3行	1-3-1 1-3-2 1-3-3 1-3-4	1-3-2 1-3-2 1-3-2 1-3-2	1-3-3 1-3-3 1-3-3 1-3-3	1-3-4 1-3-4 1-3-4 1-3-4	1-3-5 1-3-5 1-3-5 1-3-5	1-3-6 1-3-6 1-3-6 1-3-6
第4行	1-4-1 1-4-2 1-4-3 1-4-4	1-4-2 1-4-2 1-4-2 1-4-2	1-4-3 1-4-3 1-4-3 1-4-3	1-4-4 1-4-4 1-4-4 1-4-4	1-4-5 1-4-5 1-4-5 1-4-5	1-4-6 1-4-6 1-4-6 1-4-6
第5行	1-5-1 1-5-2 1-5-3 1-5-4	1-5-2 1-5-2 1-5-2 1-5-2	1-5-3 1-5-3 1-5-3 1-5-3	1-5-4 1-5-4 1-5-4 1-5-4	1-5-5 1-5-5 1-5-5 1-5-5	1-5-6 1-5-6 1-5-6 1-5-6
第6行	1-6-1 1-6-2 1-6-3 1-6-4	1-6-2 1-6-2 1-6-2 1-6-2	1-6-3 1-6-3 1-6-3 1-6-3	1-6-4 1-6-4 1-6-4 1-6-4	1-6-5 1-6-5 1-6-5 1-6-5	1-6-6 1-6-6 1-6-6 1-6-6

#### Numbering instructions:

The first digit is the screen number; the second digit is the box row number, from top to bottom, with the top being the first row; the third digit is the box column number:

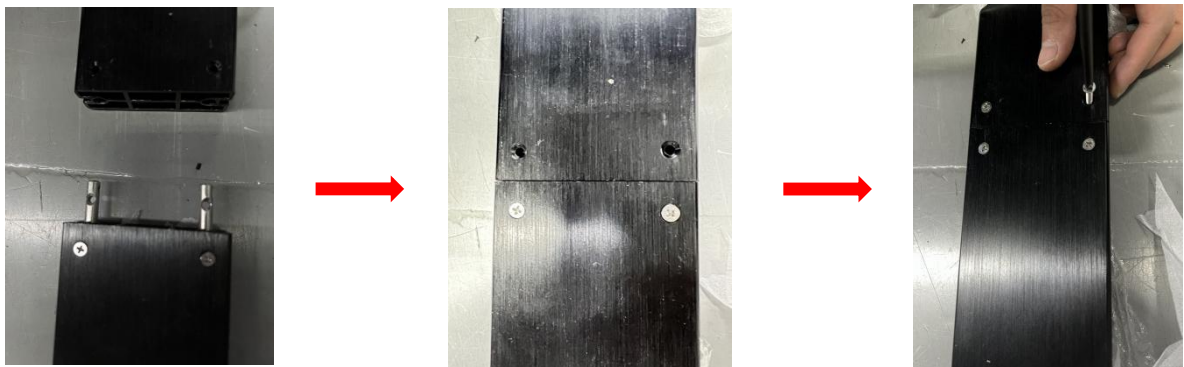
For example, 1-1-2 is the first row and second column at the top of the first screen.

### 2.2 X151 Wall Mount Version Installation

#### 2.2.1 Mounting Bracket

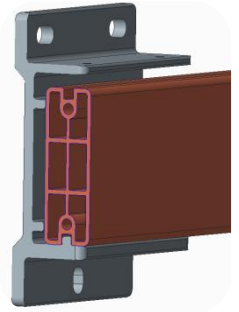
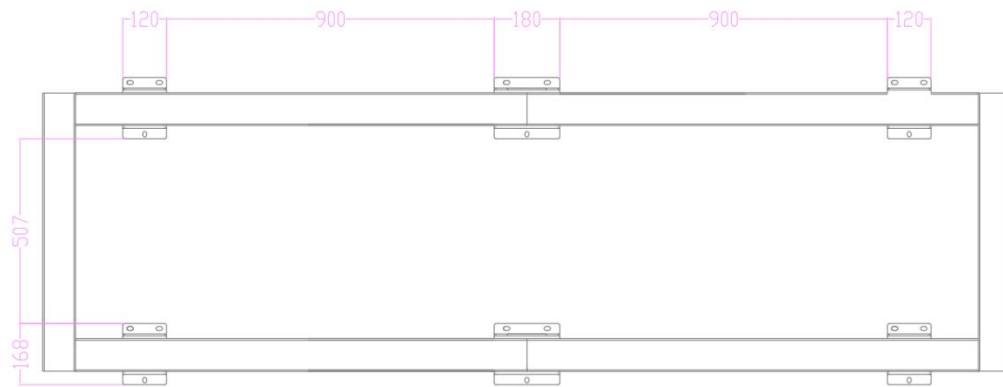
Remove the backpack from the box, including the horizontal and vertical beams. Lay it out on the ground with the front side facing up (the side with the silkscreen logo on the crossbar is the front side);

First assemble the crossbeam with 4 M4 screws.



### 2.2.2 Installation of the back frame fixing angle code

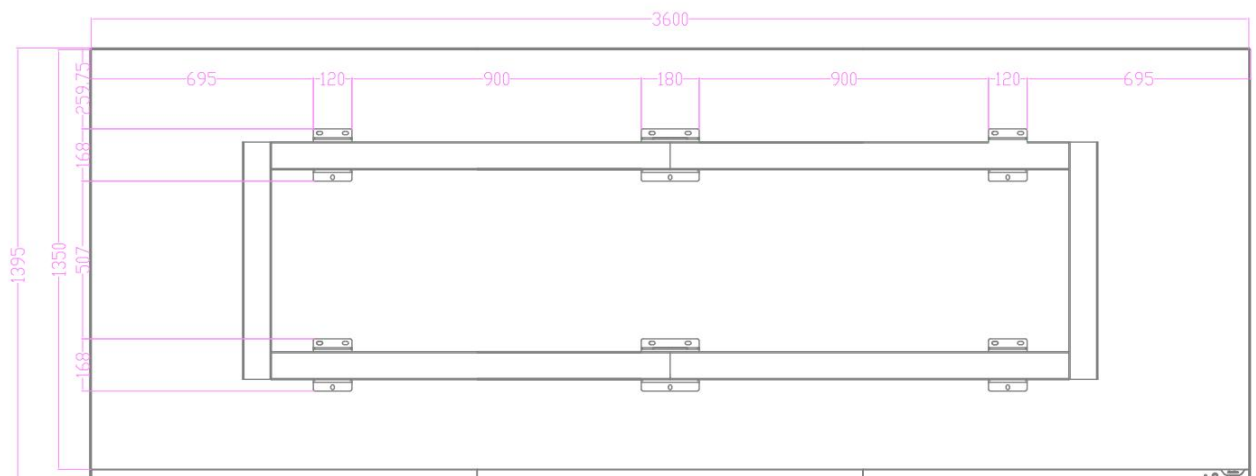
- (1) Instructions for installing the backstay fixing corners;



Angle code for fixing the back frame.

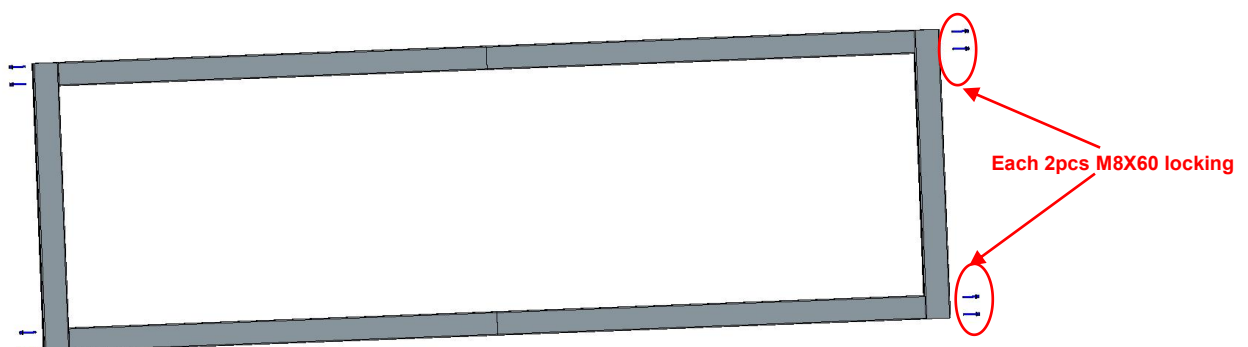
(each fixed with 3 M8 expansion screws)

- (2) After confirming the installation position of the back frame fixing corner code and the position of the screen, punch holes on the wall to install the fixing corner code;

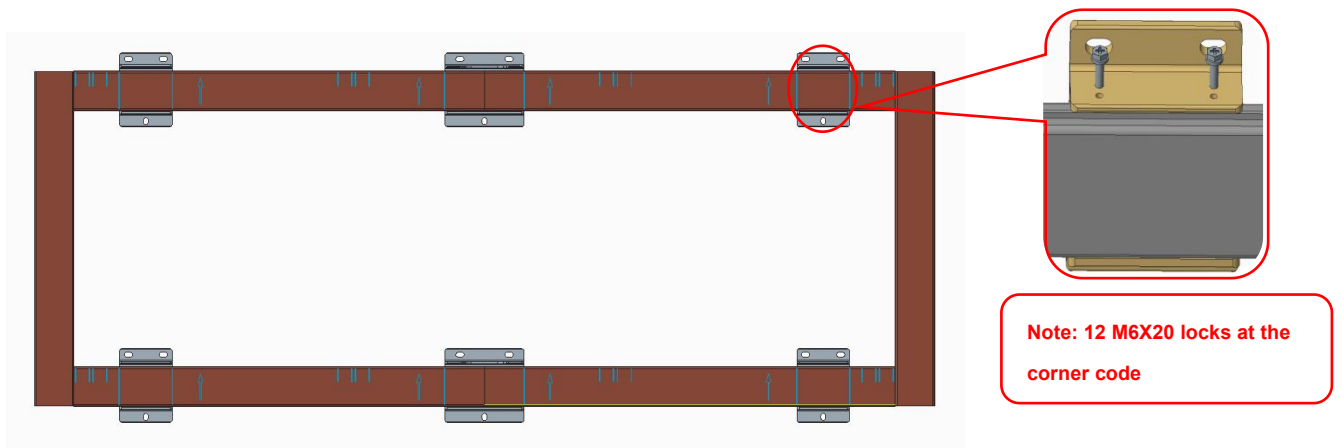


### 2.2.3 Fixed wall bracket

After installing the corner bracket, install the wall bracket and fix it with 2 M8X60 screws at each position; and tighten the M6X20 safety screws to prevent the back bracket from falling off.





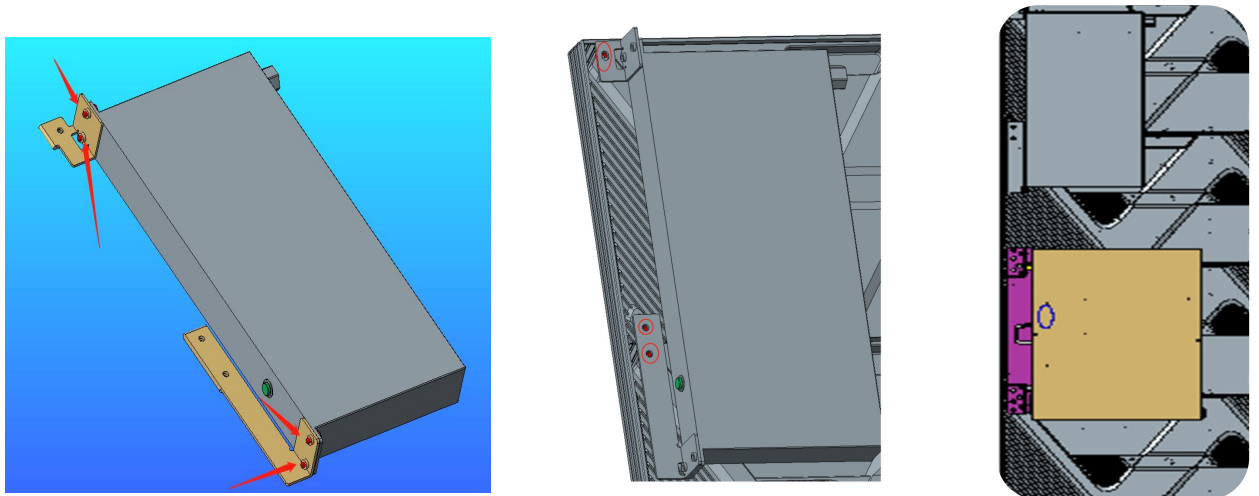


### 2.2.4 Control Box and Power Sequencer Installation

(1) Control box mounting: Use 4 M6 screws to secure the control box bracket to the rightmost column (front view) of the box, the second box below.

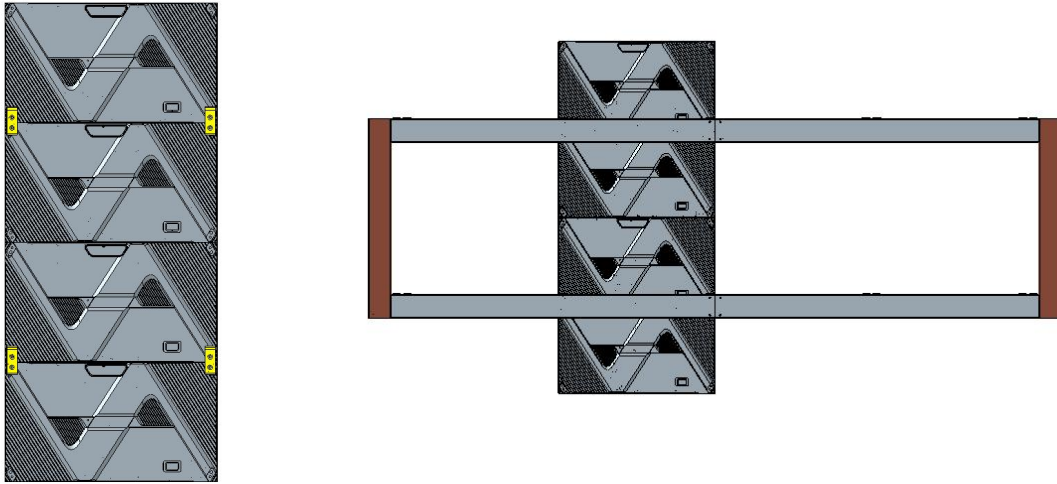


(2) POWER TIMING INSTALLATION: Use the screws inside the power network timer package to secure the bracket to the power network timer as shown in the illustration, and then mount the whole thing to the box above the control box bracket.

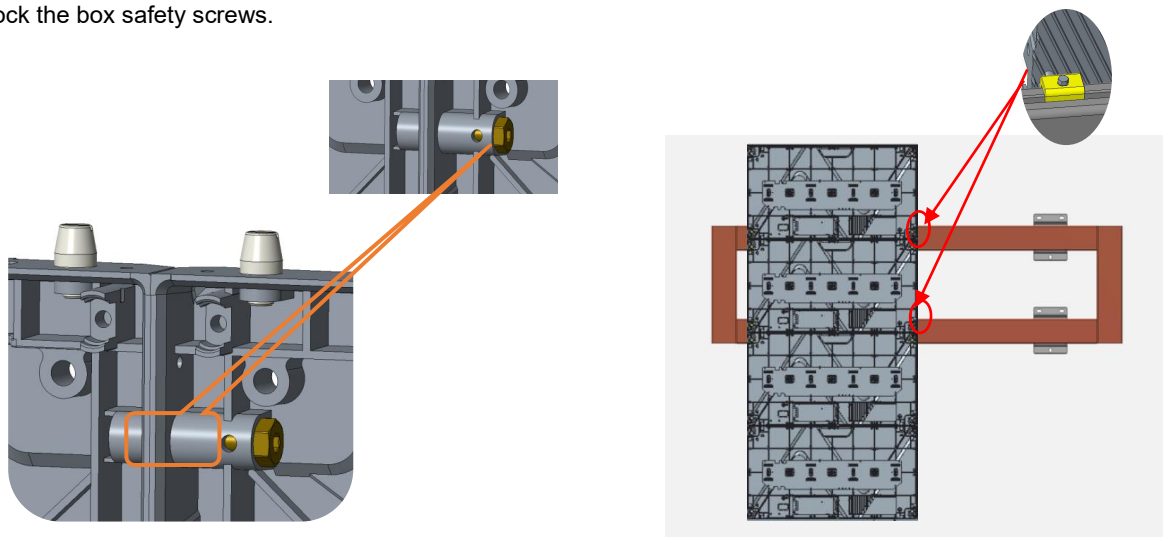


### 2.2.5 Mounting box

(1) Hang and mount each column of boxes on the back frame in order of serial number, with the edge columns of boxes on either side mounted last.

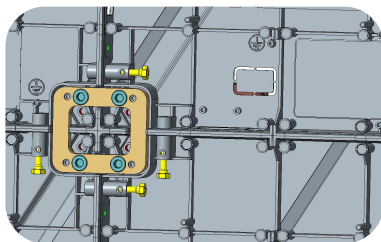


(2) Hang the left and right side of the box in turn, lock the left and right connecting bolts on the box and lock the box safety screws.



Note: Details show. Lock M4\*4 security screws after hanging.

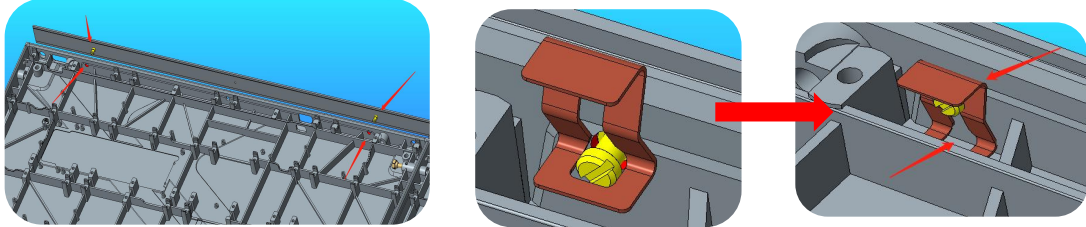
(3) After completing the box installation, use M8X20 screws to install the box leveling connecting piece.



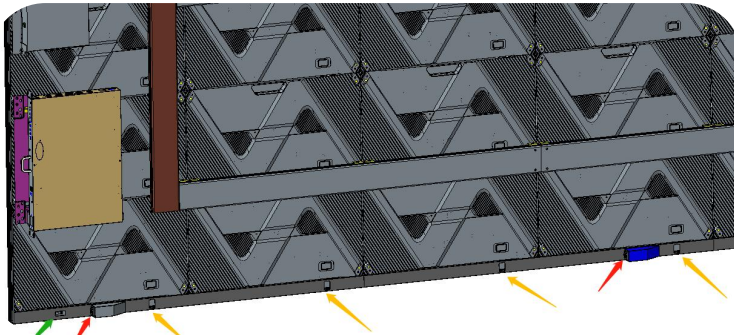
**Note:** The internal structure is based on the real thing.

### 2.2.6 mounting brackets

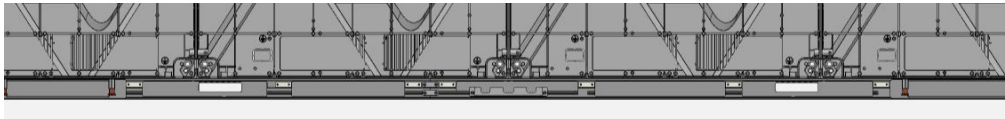
(1) Installation of the screen body on the left, right and left edge through the edge of the positioning column and the corresponding positioning holes with the box, and then use the edge of the internal fittings shrapnel fixed mounting



(2) Installation of the lower edge: the power cord, network cable and infrared button 5pin cable should be threaded into the lower edge before assembling the edge on the box.

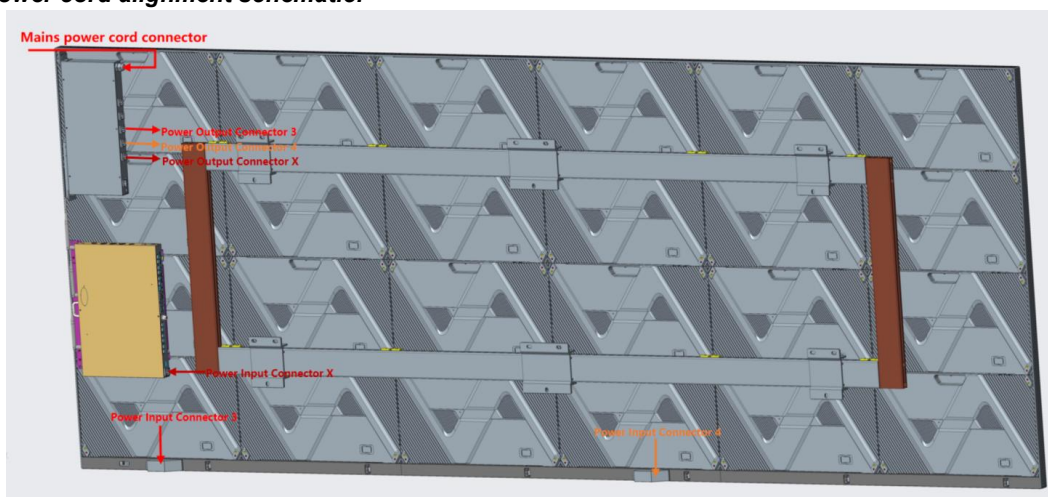


(3) Installation of the lower edge: the power cord, network cable and infrared button 5pin cable should be threaded into the lower edge before assembling the edge on the box.



**Remarks:** The internal structure is subject to the real thing; the wrapping edge with logo and start button is installed on the right side, it is recommended to assemble the lower wrapping edge on the right side first and then assemble the lower wrapping edge on the left side.

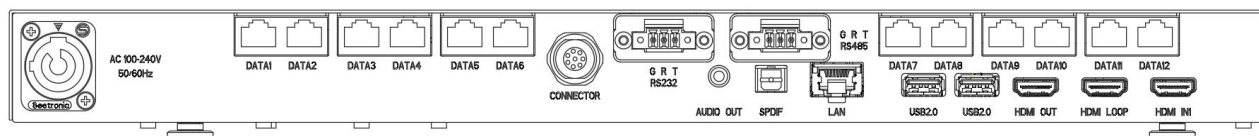
**Power cord alignment schematic:**



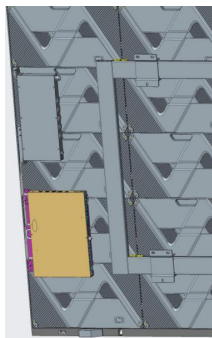


## 2.2.7 Installation of control box

- (1) Connect the control box network cable. According to the order of proximity to the control box, start connecting from port 1.



- (2) Assemble the control box by following the control box slides



## 2.2.8 Mounting Module

Box arrangement coding:

第1行	1-1	1-2	1-3	1-4	1-5	1-6
第2行	2-1	2-2	2-3	2-4	2-5	2-6
第3行	3-1	3-2	3-3	3-4	3-5	3-6
第4行	4-1	4-2	4-3	4-4	4-5	4-6
第5行	5-1	5-2	5-3	5-4	5-5	5-6
第6行	6-1	6-2	6-3	6-4	6-5	6-6
	第1列	第2列	第3列	第4列	第5列	第6列

Lamp panel arrangement coding:

	第1列箱体灯板校正编码	第2列箱体灯板校正编码	第3列箱体灯板校正编码	第4列箱体灯板校正编码	第5列箱体灯板校正编码	第6列箱体灯板校正编码
第1行	1-1-1-1 1-1-1-2 1-1-1-3 1-1-1-4	1-1-2-1 1-1-2-2 1-1-2-3 1-1-2-4	1-1-3-1 1-1-3-2 1-1-3-3 1-1-3-4	1-1-4-1 1-1-4-2 1-1-4-3 1-1-4-4	1-1-5-1 1-1-5-2 1-1-5-3 1-1-5-4	1-1-6-1 1-1-6-2 1-1-6-3 1-1-6-4
第2行	1-1-1-5 1-1-1-6 1-1-1-7 1-1-1-8	1-1-2-5 1-1-2-6 1-1-2-7 1-1-2-8	1-1-3-5 1-1-3-6 1-1-3-7 1-1-3-8	1-1-4-5 1-1-4-6 1-1-4-7 1-1-4-8	1-1-5-5 1-1-5-6 1-1-5-7 1-1-5-8	1-1-6-5 1-1-6-6 1-1-6-7 1-1-6-8
第3行	1-2-1-1 1-2-1-2 1-2-1-3 1-2-1-4	1-2-2-1 1-2-2-2 1-2-2-3 1-2-2-4	1-2-3-1 1-2-3-2 1-2-3-3 1-2-3-4	1-2-4-1 1-2-4-2 1-2-4-3 1-2-4-4	1-2-5-1 1-2-5-2 1-2-5-3 1-2-5-4	1-2-6-1 1-2-6-2 1-2-6-3 1-2-6-4
第4行	1-2-1-5 1-2-1-6 1-2-1-7 1-2-1-8	1-2-2-5 1-2-2-6 1-2-2-7 1-2-2-8	1-2-3-5 1-2-3-6 1-2-3-7 1-2-3-8	1-2-4-5 1-2-4-6 1-2-4-7 1-2-4-8	1-2-5-5 1-2-5-6 1-2-5-7 1-2-5-8	1-2-6-5 1-2-6-6 1-2-6-7 1-2-6-8
第5行	1-3-1-1 1-3-1-2 1-3-1-3 1-3-1-4	1-3-2-1 1-3-2-2 1-3-2-3 1-3-2-4	1-3-3-1 1-3-3-2 1-3-3-3 1-3-3-4	1-3-4-1 1-3-4-2 1-3-4-3 1-3-4-4	1-3-5-1 1-3-5-2 1-3-5-3 1-3-5-4	1-3-6-1 1-3-6-2 1-3-6-3 1-3-6-4
第6行	1-3-1-5 1-3-1-6 1-3-1-7 1-3-1-8	1-3-2-5 1-3-2-6 1-3-2-7 1-3-2-8	1-3-3-5 1-3-3-6 1-3-3-7 1-3-3-8	1-3-4-5 1-3-4-6 1-3-4-7 1-3-4-8	1-3-5-5 1-3-5-6 1-3-5-7 1-3-5-8	1-3-6-5 1-3-6-6 1-3-6-7 1-3-6-8
第7行	1-4-1-1 1-4-1-2 1-4-1-3 1-4-1-4	1-4-2-1 1-4-2-2 1-4-2-3 1-4-2-4	1-4-3-1 1-4-3-2 1-4-3-3 1-4-3-4	1-4-4-1 1-4-4-2 1-4-4-3 1-4-4-4	1-4-5-1 1-4-5-2 1-4-5-3 1-4-5-4	1-4-6-1 1-4-6-2 1-4-6-3 1-4-6-4
第8行	1-4-1-5 1-4-1-6 1-4-1-7 1-4-1-8	1-4-2-5 1-4-2-6 1-4-2-7 1-4-2-8	1-4-3-5 1-4-3-6 1-4-3-7 1-4-3-8	1-4-4-5 1-4-4-6 1-4-4-7 1-4-4-8	1-4-5-5 1-4-5-6 1-4-5-7 1-4-5-8	1-4-6-5 1-4-6-6 1-4-6-7 1-4-6-8
第9行	1-5-1-1 1-5-1-2 1-5-1-3 1-5-1-4	1-5-2-1 1-5-2-2 1-5-2-3 1-5-2-4	1-5-3-1 1-5-3-2 1-5-3-3 1-5-3-4	1-5-4-1 1-5-4-2 1-5-4-3 1-5-4-4	1-5-5-1 1-5-5-2 1-5-5-3 1-5-5-4	1-5-6-1 1-5-6-2 1-5-6-3 1-5-6-4
第10行	1-5-1-5 1-5-1-6 1-5-1-7 1-5-1-8	1-5-2-5 1-5-2-6 1-5-2-7 1-5-2-8	1-5-3-5 1-5-3-6 1-5-3-7 1-5-3-8	1-5-4-5 1-5-4-6 1-5-4-7 1-5-4-8	1-5-5-5 1-5-5-6 1-5-5-7 1-5-5-8	1-5-6-5 1-5-6-6 1-5-6-7 1-5-6-8
第11行	1-6-1-1 1-6-1-2 1-6-1-3 1-6-1-4	1-6-2-1 1-6-2-2 1-6-2-3 1-6-2-4	1-6-3-1 1-6-3-2 1-6-3-3 1-6-3-4	1-6-4-1 1-6-4-2 1-6-4-3 1-6-4-4	1-6-5-1 1-6-5-2 1-6-5-3 1-6-5-4	1-6-6-1 1-6-6-2 1-6-6-3 1-6-6-4
第12行	1-6-1-5 1-6-1-6 1-6-1-7 1-6-1-8	1-6-2-5 1-6-2-6 1-6-2-7 1-6-2-8	1-6-3-5 1-6-3-6 1-6-3-7 1-6-3-8	1-6-4-5 1-6-4-6 1-6-4-7 1-6-4-8	1-6-5-5 1-6-5-6 1-6-5-7 1-6-5-8	1-6-6-5 1-6-6-6 1-6-6-7 1-6-6-8

Install the modules in numbered sequence.

## 2.3 X178 Wall Mount Version Installation

### 2.3.1 Mounting Bracket

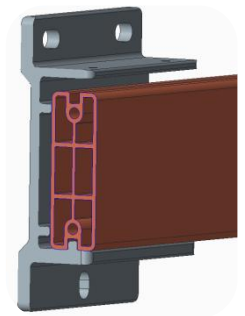
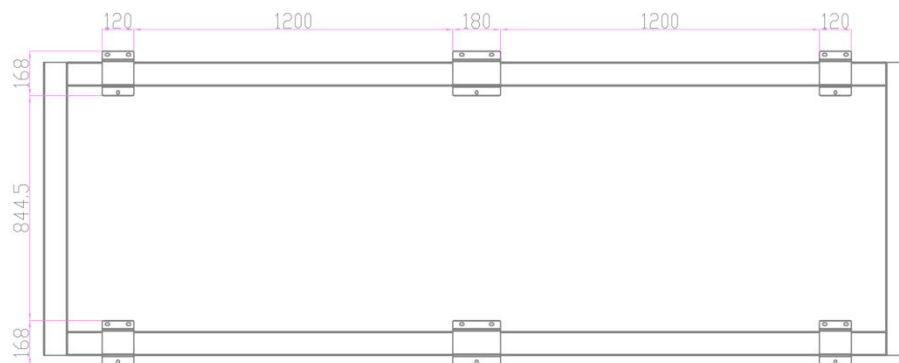
Remove the backpack from the box, including the horizontal and vertical beams. Lay it out on the ground with the front side facing up (the crossbeam with the silkscreen logo side is the front side);

First assemble the beams, using 4 M3 screws.



### 2.3.2 Installation of the back frame fixing angle code

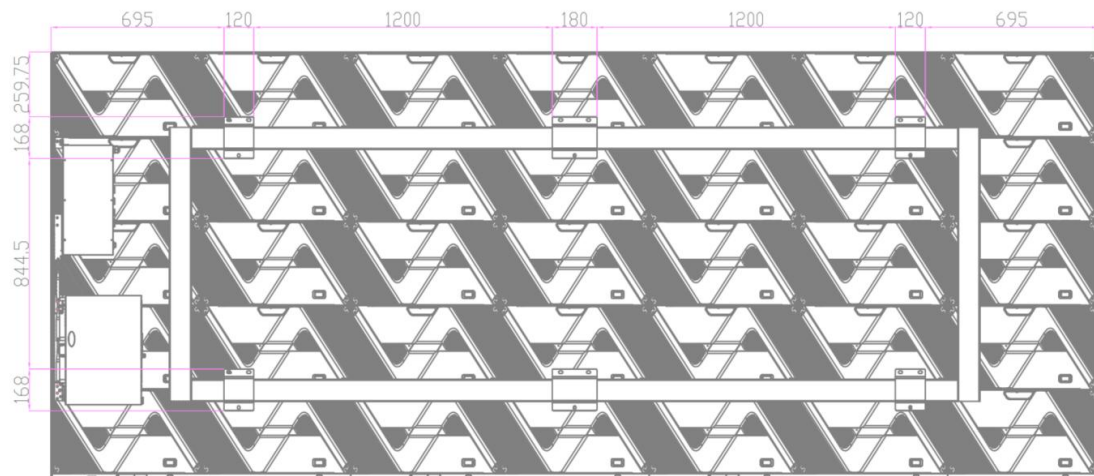
(1) Instructions for installing the backstay fixing corners;



Angle code for fixing the back frame.

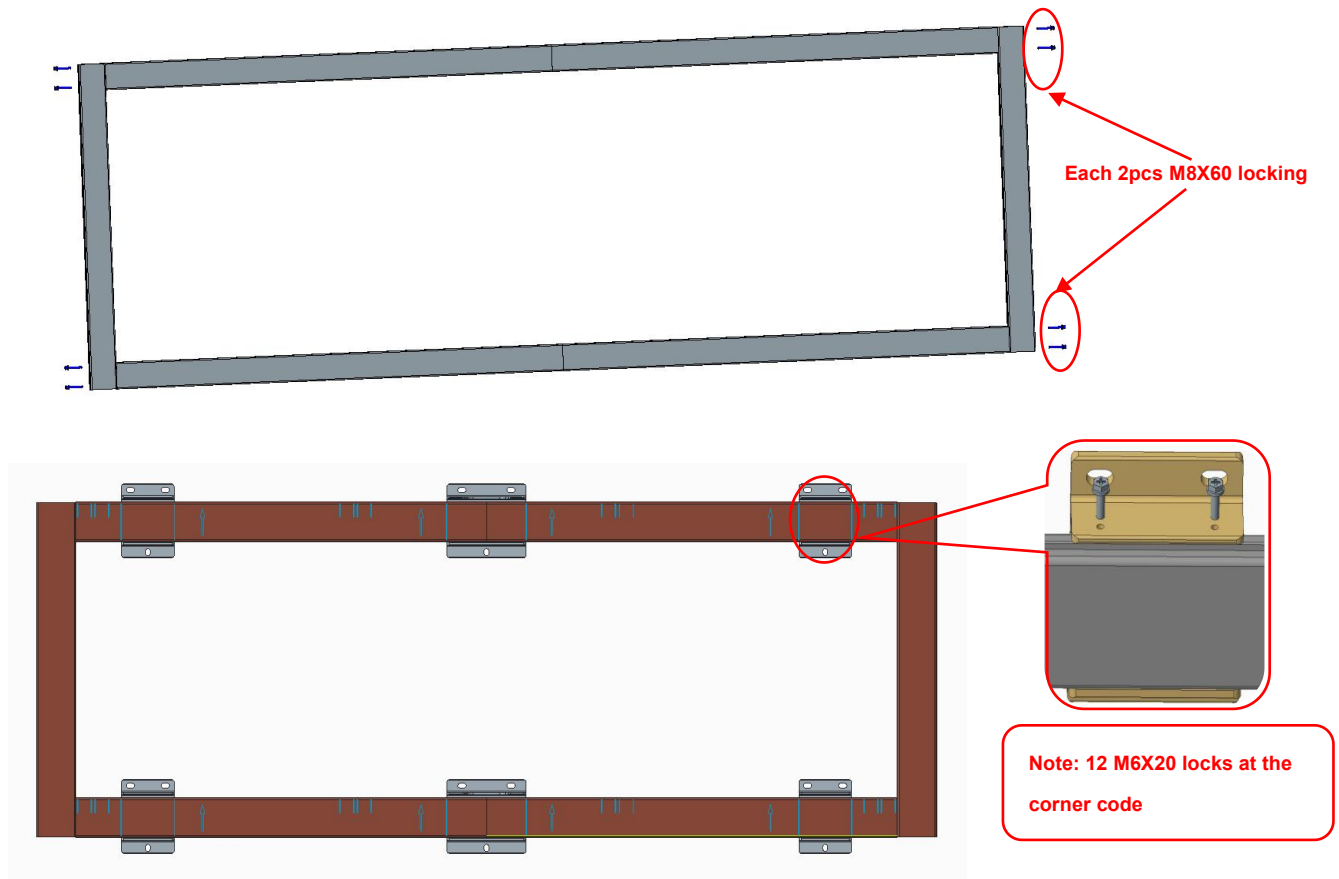
(each fixed with 3 M8 expansion screws)

(2) After confirming the installation position of the back frame fixing corner code and the position of the screen body, punch holes on the wall to install the fixing corner code.



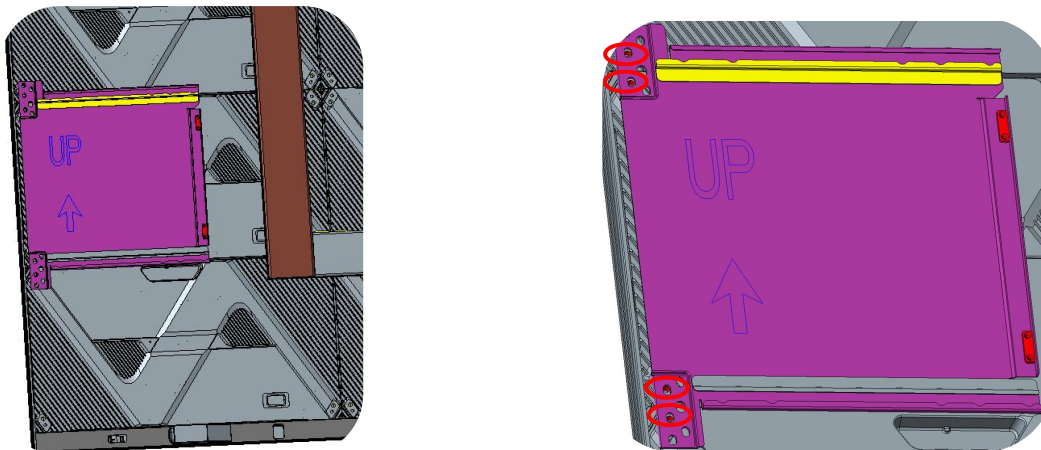
### 2.3.3 Fixed wall bracket

After installing the corner bracket, install the wall bracket and fix it with two M8X60 screws at each position; and tighten the M4 safety screws to prevent the back bracket from falling off.

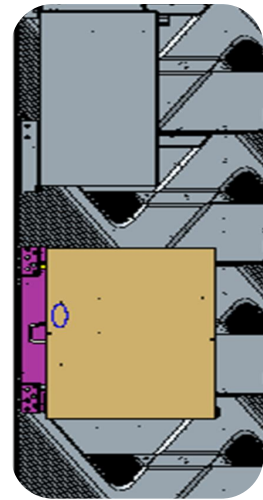
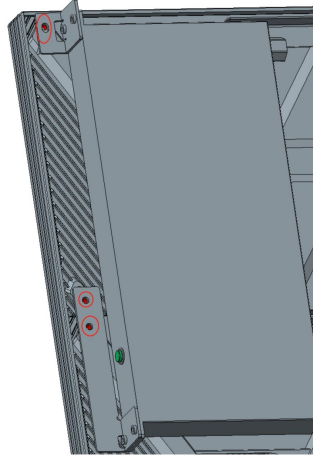
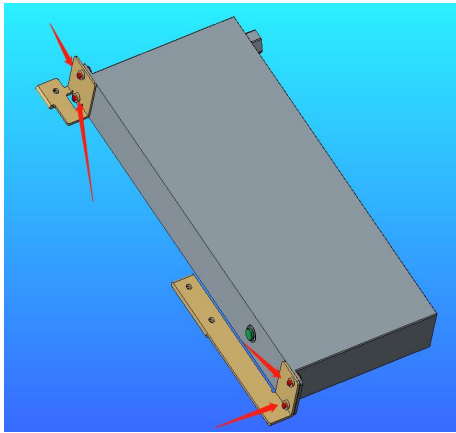


### 2.3.4 Control Box and Power Sequencer Installation

(1) Control box mounting: Use 4 M6 screws to secure the control box bracket to the rightmost column (front view) of the box, the second box below.

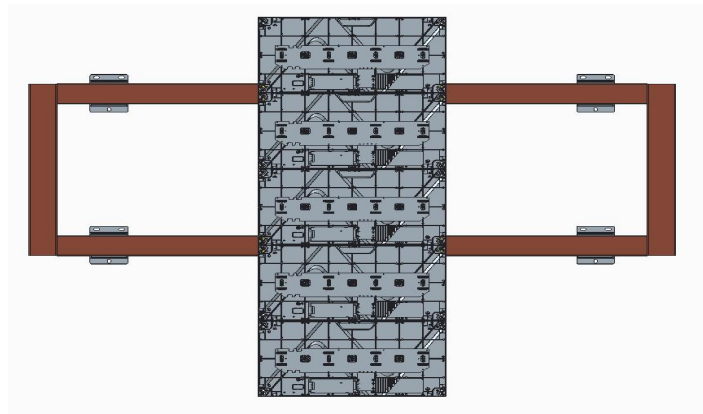
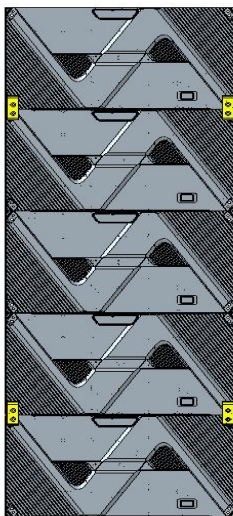


(2) **POWER TIMING INSTALLATION:** Use the screws inside the power network timer package to secure the bracket to the power network timer as shown in the illustration, and then mount the whole thing to the box above the control box bracket.

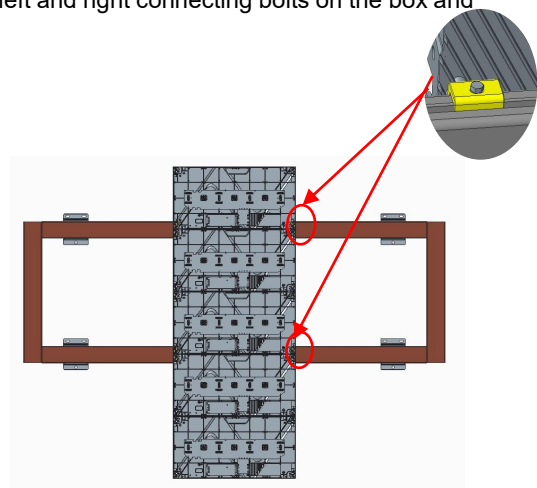
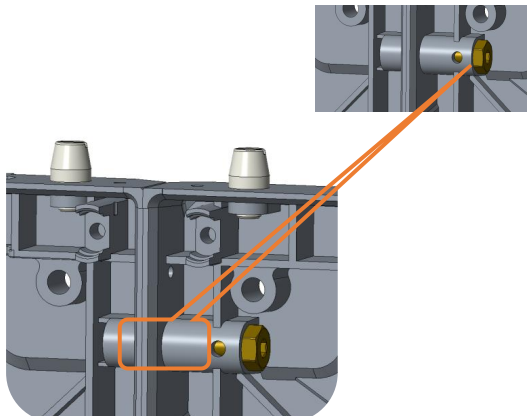


### 2.3.5 Mounting box

(1) Hang and mount each column of boxes on the back frame in order of serial number, with the edge columns of boxes on either side mounted last.



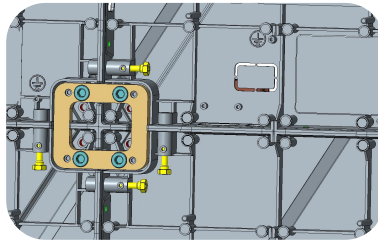
(2) Hang the left and right side of the box in turn, lock the left and right connecting bolts on the box and lock the box safety screws.





*Note: Details show. Lock M4\*4 security screws after hanging.*

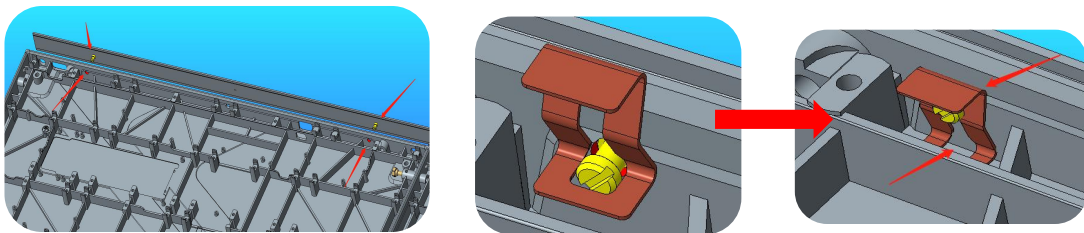
- (3) After completing the box installation, use M8X20 screws to install the box leveling connecting piece.



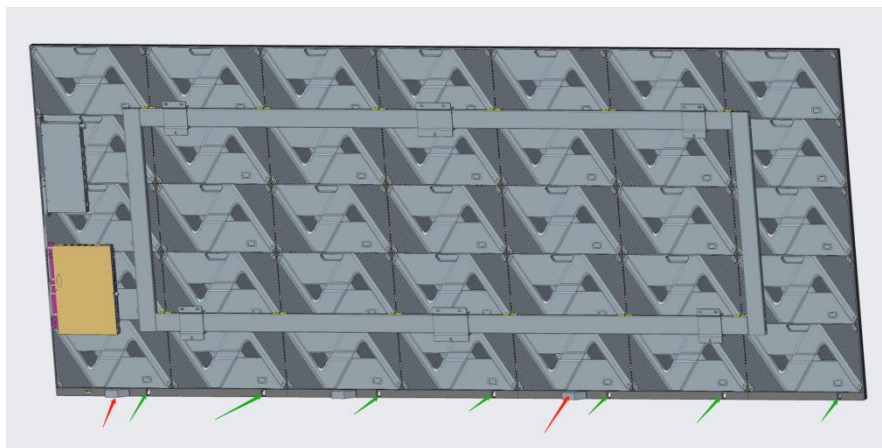
*Note: The internal structure is based on the real thing.*

### 2.3.6 Mounting brackets

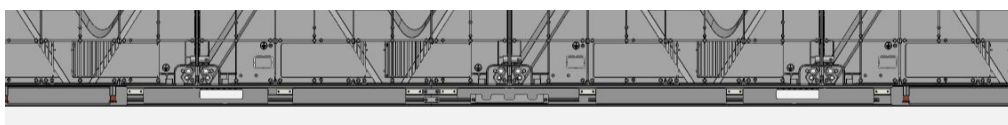
- (1) Installation of the screen body on the left, right and left edge through the edge of the positioning column and the corresponding positioning holes with the box, and then use the edge of the internal fittings shrapnel fixed mounting



- (2) Installation of the lower edge: the power cord, network cable and infrared button 5pin cable should be threaded into the lower edge before assembling the edge on the box.



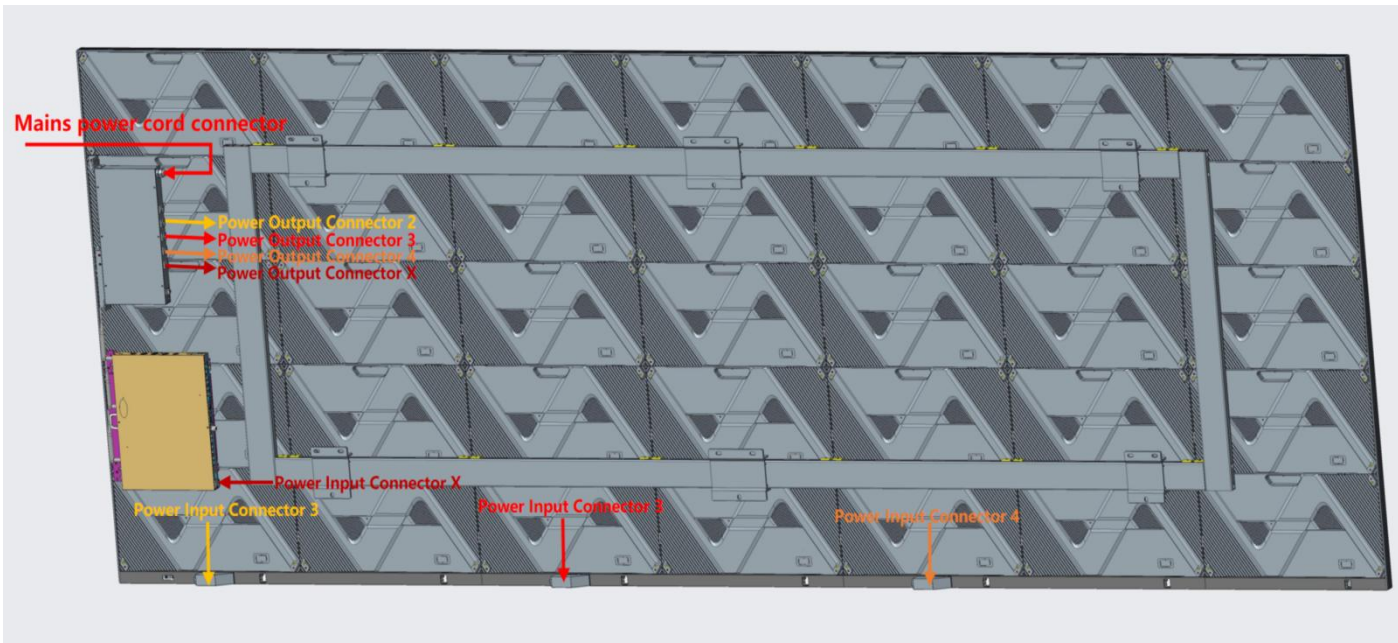
- (3) Lower wrap-around segments and screen body installation, the network cable and power cord through the box, lock the lower wrap-around and box fixing screws





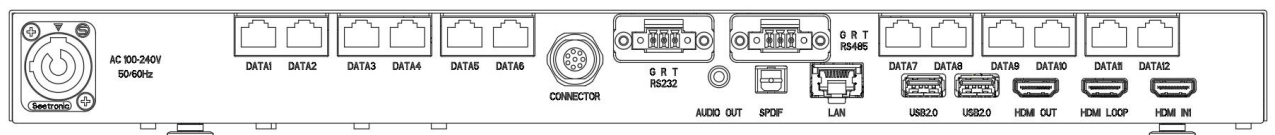
Remarks: The internal structure is subject to the real thing; the wrapping edge with logo and start button is installed on the right side, it is recommended to assemble the lower wrapping edge on the right side first and then assemble the lower wrapping edge on the left side.

### Power cord alignment schematic:



### 2.3.7 Installation of control box

(1) Connect the control box network cable. Connect the cables in order of proximity to the control box, starting with port 1



(2) Assemble the control box by following the control box slides



### 2.3.8 Mounting Module

Box arrangement coding:

第1行	1-1	1-2	1-3	1-4	1-5	1-6	1-7
第2行	2-1	2-2	2-3	2-4	2-5	2-6	2-7
第3行	3-1	3-2	3-3	3-4	3-5	3-6	3-7
第4行	4-1	4-2	4-3	4-4	4-5	4-6	4-7
第5行	5-1	5-2	5-3	5-4	5-5	5-6	5-7
第6行	6-1	6-2	6-3	6-4	6-5	6-6	6-7
	第1列	第2列	第3列	第4列	第5列	第6列	第7列

Lamp panel arrangement coding:

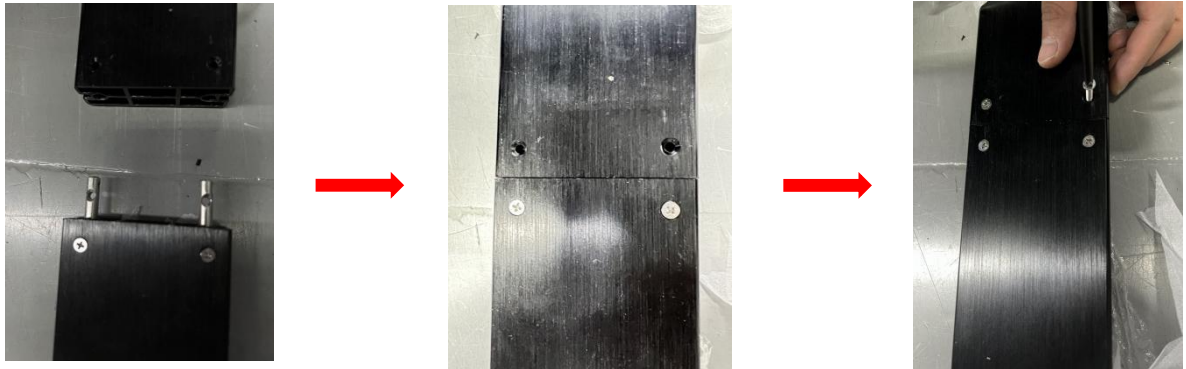
	第1列箱体灯板校正编码	第2列箱体灯板校正编码	第3列箱体灯板校正编码	第4列箱体灯板校正编码	第5列箱体灯板校正编码	第6列箱体灯板校正编码	第7列箱体灯板校正编码
第1行	1-1-1-1 1-1-1-2 1-1-1-3 1-1-1-4 1-1-1-5 1-1-1-6 1-1-1-7 1-1-1-8	1-1-2-1 1-1-2-2 1-1-2-3 1-1-2-4 1-1-2-5 1-1-2-6 1-1-2-7 1-1-2-8	1-1-3-1 1-1-3-2 1-1-3-3 1-1-3-4 1-1-3-5 1-1-3-6 1-1-3-7 1-1-3-8	1-1-4-1 1-1-4-2 1-1-4-3 1-1-4-4 1-1-4-5 1-1-4-6 1-1-4-7 1-1-4-8	1-1-5-1 1-1-5-2 1-1-5-3 1-1-5-4 1-1-5-5 1-1-5-6 1-1-5-7 1-1-5-8	1-1-6-1 1-1-6-2 1-1-6-3 1-1-6-4 1-1-6-5 1-1-6-6 1-1-6-7 1-1-6-8	1-1-7-1 1-1-7-2 1-1-7-3 1-1-7-4 1-1-7-5 1-1-7-6 1-1-7-7 1-1-7-8
第2行	1-2-1-1 1-2-1-2 1-2-1-3 1-2-1-4 1-2-1-5 1-2-1-6 1-2-1-7 1-2-1-8	1-2-2-1 1-2-2-2 1-2-2-3 1-2-2-4 1-2-2-5 1-2-2-6 1-2-2-7 1-2-2-8	1-2-3-1 1-2-3-2 1-2-3-3 1-2-3-4 1-2-3-5 1-2-3-6 1-2-3-7 1-2-3-8	1-2-4-1 1-2-4-2 1-2-4-3 1-2-4-4 1-2-4-5 1-2-4-6 1-2-4-7 1-2-4-8	1-2-5-1 1-2-5-2 1-2-5-3 1-2-5-4 1-2-5-5 1-2-5-6 1-2-5-7 1-2-5-8	1-2-6-1 1-2-6-2 1-2-6-3 1-2-6-4 1-2-6-5 1-2-6-6 1-2-6-7 1-2-6-8	1-2-7-1 1-2-7-2 1-2-7-3 1-2-7-4 1-2-7-5 1-2-7-6 1-2-7-7 1-2-7-8
第3行	1-3-1-1 1-3-1-2 1-3-1-3 1-3-1-4 1-3-1-5 1-3-1-6 1-3-1-7 1-3-1-8	1-3-2-1 1-3-2-2 1-3-2-3 1-3-2-4 1-3-2-5 1-3-2-6 1-3-2-7 1-3-2-8	1-3-3-1 1-3-3-2 1-3-3-3 1-3-3-4 1-3-3-5 1-3-3-6 1-3-3-7 1-3-3-8	1-3-4-1 1-3-4-2 1-3-4-3 1-3-4-4 1-3-4-5 1-3-4-6 1-3-4-7 1-3-4-8	1-3-5-1 1-3-5-2 1-3-5-3 1-3-5-4 1-3-5-5 1-3-5-6 1-3-5-7 1-3-5-8	1-3-6-1 1-3-6-2 1-3-6-3 1-3-6-4 1-3-6-5 1-3-6-6 1-3-6-7 1-3-6-8	1-3-7-1 1-3-7-2 1-3-7-3 1-3-7-4 1-3-7-5 1-3-7-6 1-3-7-7 1-3-7-8
第4行	1-4-1-1 1-4-1-2 1-4-1-3 1-4-1-4 1-4-1-5 1-4-1-6 1-4-1-7 1-4-1-8	1-4-2-1 1-4-2-2 1-4-2-3 1-4-2-4 1-4-2-5 1-4-2-6 1-4-2-7 1-4-2-8	1-4-3-1 1-4-3-2 1-4-3-3 1-4-3-4 1-4-3-5 1-4-3-6 1-4-3-7 1-4-3-8	1-4-4-1 1-4-4-2 1-4-4-3 1-4-4-4 1-4-4-5 1-4-4-6 1-4-4-7 1-4-4-8	1-4-5-1 1-4-5-2 1-4-5-3 1-4-5-4 1-4-5-5 1-4-5-6 1-4-5-7 1-4-5-8	1-4-6-1 1-4-6-2 1-4-6-3 1-4-6-4 1-4-6-5 1-4-6-6 1-4-6-7 1-4-6-8	1-4-7-1 1-4-7-2 1-4-7-3 1-4-7-4 1-4-7-5 1-4-7-6 1-4-7-7 1-4-7-8
第5行	1-5-1-1 1-5-1-2 1-5-1-3 1-5-1-4 1-5-1-5 1-5-1-6 1-5-1-7 1-5-1-8	1-5-2-1 1-5-2-2 1-5-2-3 1-5-2-4 1-5-2-5 1-5-2-6 1-5-2-7 1-5-2-8	1-5-3-1 1-5-3-2 1-5-3-3 1-5-3-4 1-5-3-5 1-5-3-6 1-5-3-7 1-5-3-8	1-5-4-1 1-5-4-2 1-5-4-3 1-5-4-4 1-5-4-5 1-5-4-6 1-5-4-7 1-5-4-8	1-5-5-1 1-5-5-2 1-5-5-3 1-5-5-4 1-5-5-5 1-5-5-6 1-5-5-7 1-5-5-8	1-5-6-1 1-5-6-2 1-5-6-3 1-5-6-4 1-5-6-5 1-5-6-6 1-5-6-7 1-5-6-8	1-5-7-1 1-5-7-2 1-5-7-3 1-5-7-4 1-5-7-5 1-5-7-6 1-5-7-7 1-5-7-8
第6行	1-6-1-1 1-6-1-2 1-6-1-3 1-6-1-4 1-6-1-5 1-6-1-6 1-6-1-7 1-6-1-8	1-6-2-1 1-6-2-2 1-6-2-3 1-6-2-4 1-6-2-5 1-6-2-6 1-6-2-7 1-6-2-8	1-6-3-1 1-6-3-2 1-6-3-3 1-6-3-4 1-6-3-5 1-6-3-6 1-6-3-7 1-6-3-8	1-6-4-1 1-6-4-2 1-6-4-3 1-6-4-4 1-6-4-5 1-6-4-6 1-6-4-7 1-6-4-8	1-6-5-1 1-6-5-2 1-6-5-3 1-6-5-4 1-6-5-5 1-6-5-6 1-6-5-7 1-6-5-8	1-6-6-1 1-6-6-2 1-6-6-3 1-6-6-4 1-6-6-5 1-6-6-6 1-6-6-7 1-6-6-8	1-6-7-1 1-6-7-2 1-6-7-3 1-6-7-4 1-6-7-5 1-6-7-6 1-6-7-7 1-6-7-8

Install the modules in numbered sequence.

## 2.4 X205 Wall Mount Version Installation

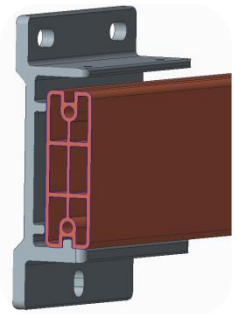
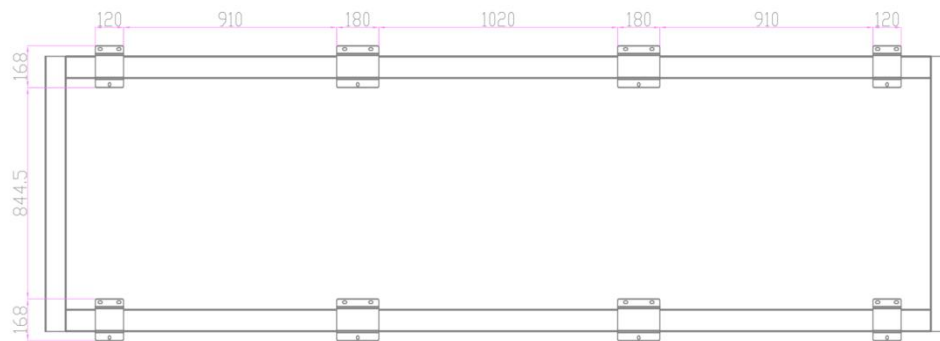
### 2.4.1 Mounting Bracket

Remove the backpack from the box, including the horizontal and vertical beams. Lay it out on the ground with the front side facing up (the crossbeam with the silkscreen logo side is the front side);  
First assemble the beams, using 4 M3 screws.



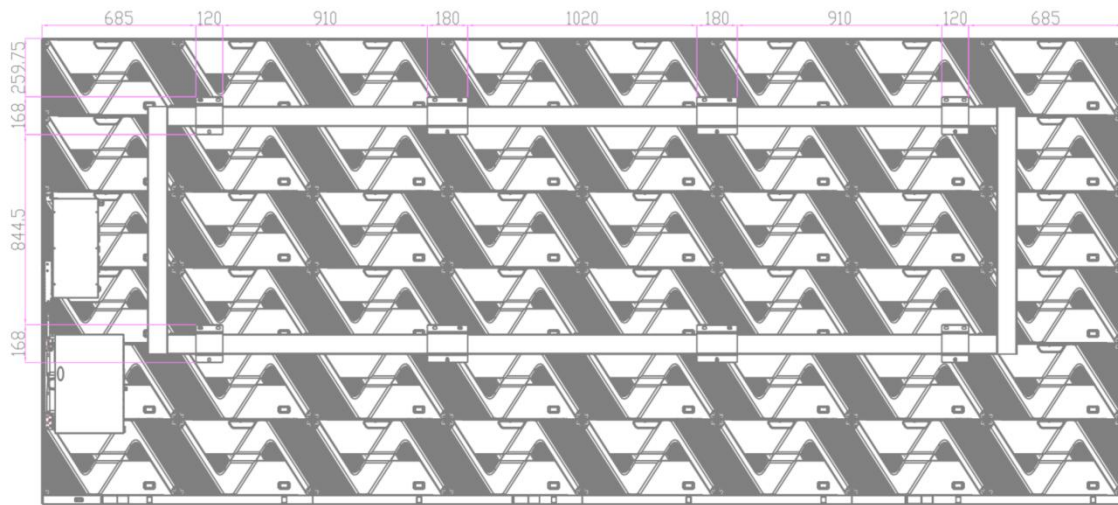
### 2.4.2 Installation of the back frame fixing angle code

(1) Instructions for installing the backstay fixing corners;



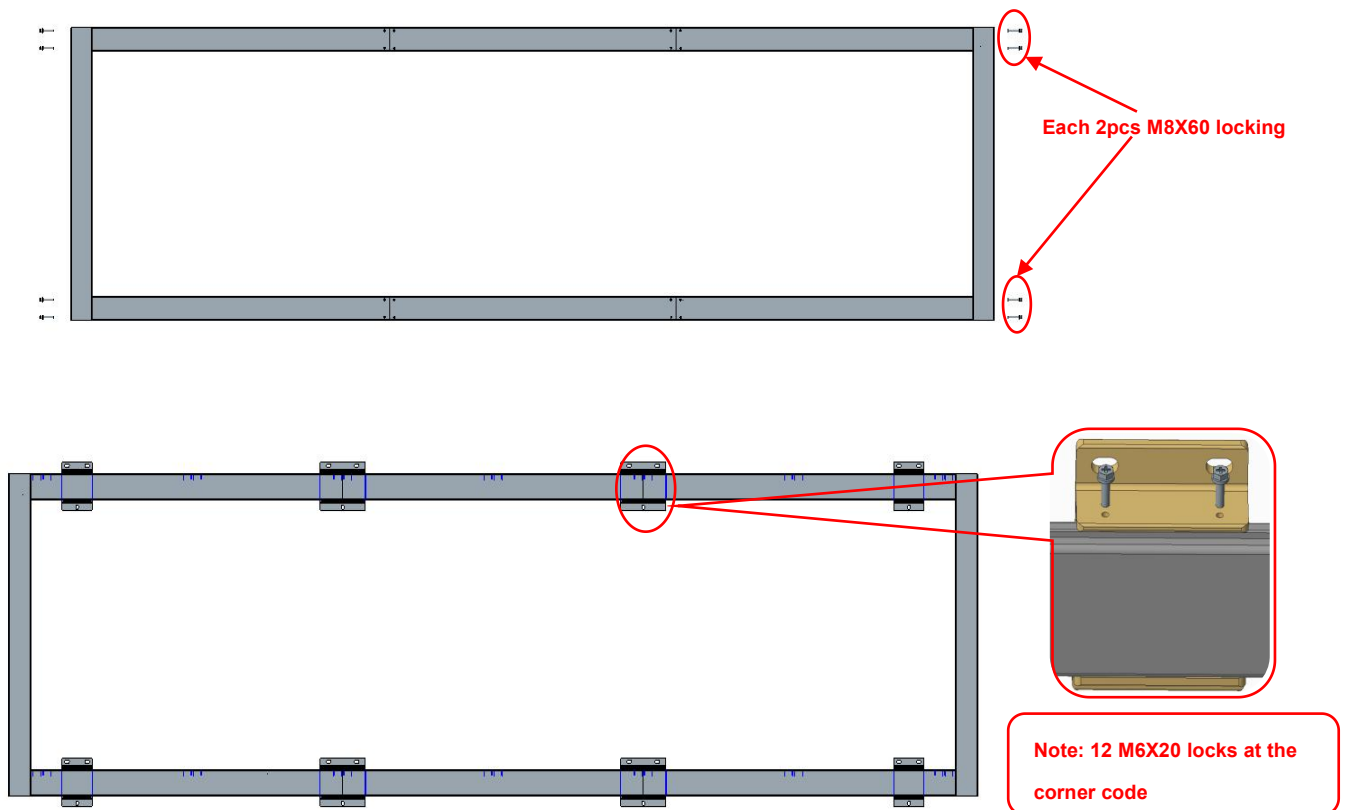
Angle code for fixing the back frame.  
(each fixed with 3 M8 expansion screws)

(2) After confirming the installation position of the back frame fixing corner code and the position of the screen, punch holes on the wall to install the fixing corner code;



#### 2.4.3 Fixed wall bracket

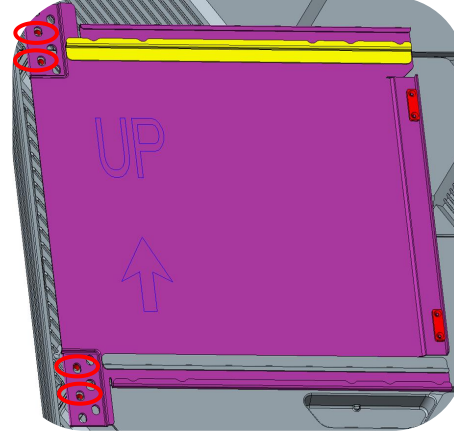
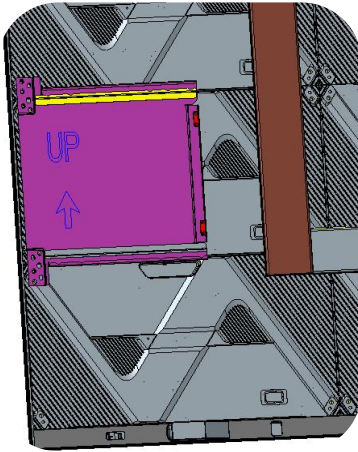
After installing the corner code, install the wall bracket and fix it with 2pcs of M8X60 screws in each position; and tighten the M4 safety screws to prevent the back bracket from falling off.



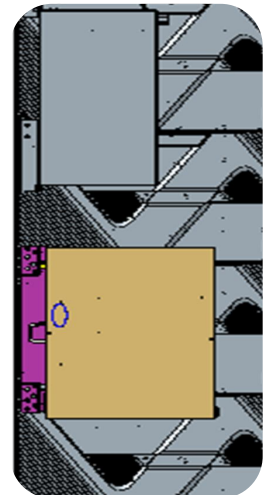
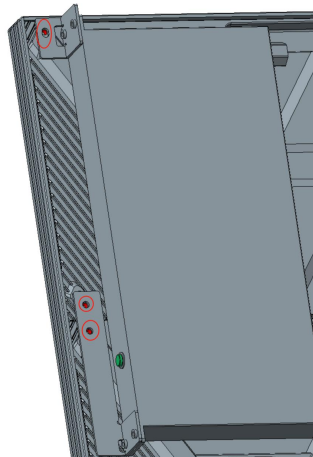
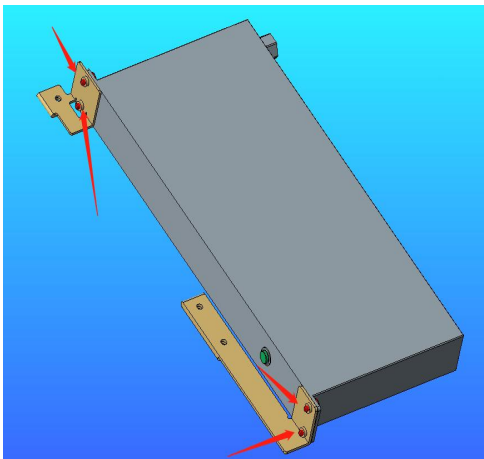


#### 2.4.4 Control Box and Power Sequencer Installation

(1) Control box mounting: Use 4 M6 screws to secure the control box bracket to the rightmost column (front view) of the box, the second box below.

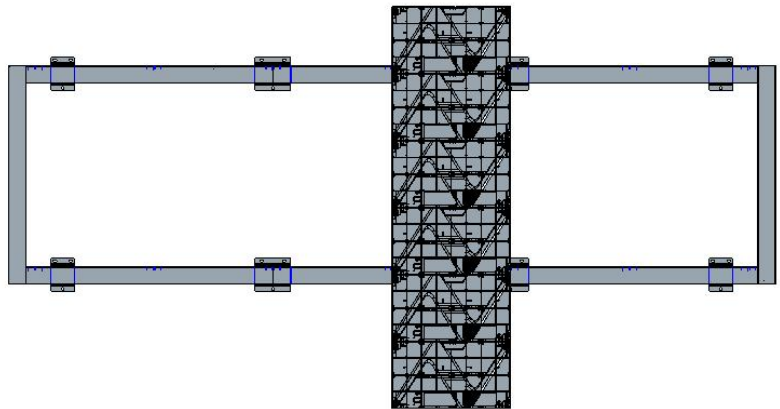
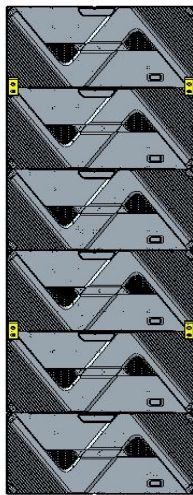


(2) POWER TIMING INSTALLATION: Use the screws inside the power network timer package to secure the bracket to the power network timer as shown in the illustration, and then mount the whole thing to the box above the control box bracket.

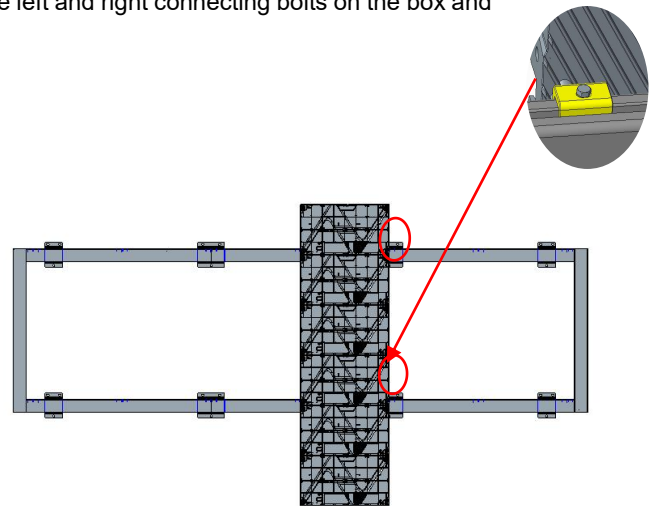
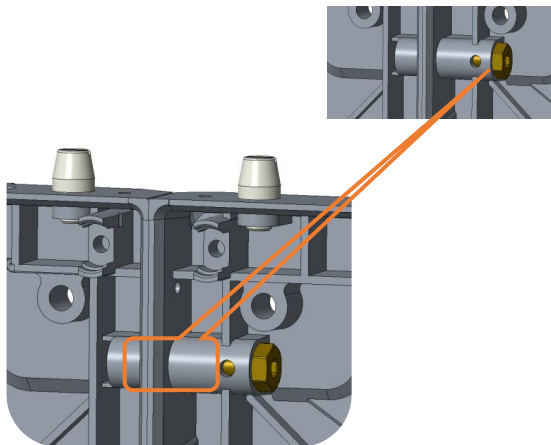


#### 2.4.5 Mounting box

(1) Hang and mount each column of boxes on the back frame in order of serial number, with the edge columns of boxes on either side mounted last.

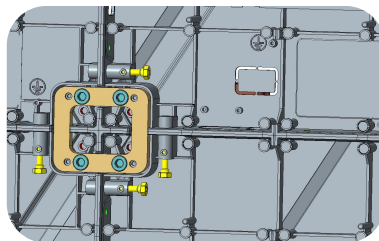


(2) Hang the left and right side of the box in turn, lock the left and right connecting bolts on the box and lock the box safety screws.



Note: Details show. Lock M4\*4 security screws after hanging.

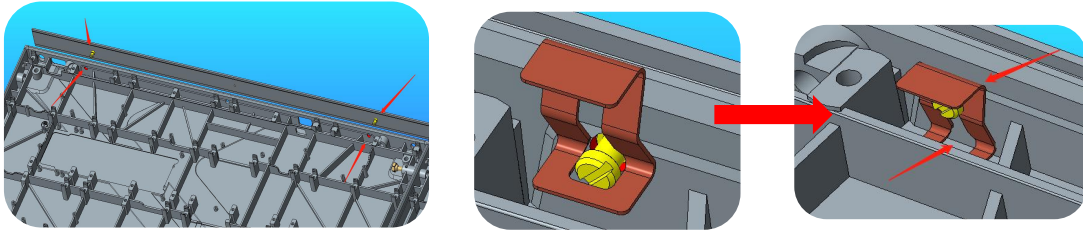
(3) After completing the box installation, use M8X20 screws to install the box leveling connecting piece.



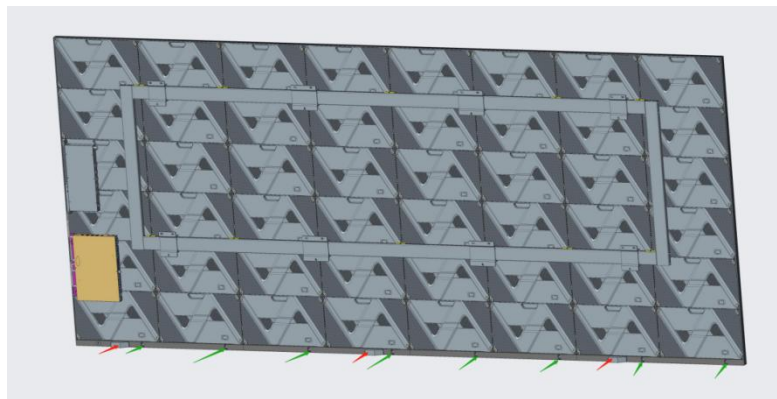
Note: The internal structure is based on the real thing.

## 2.4.6 mounting brackets

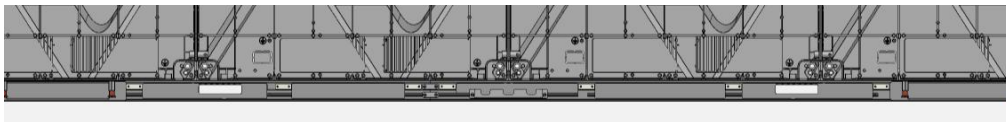
(1) Installation of the screen body on the left, right and left edge through the edge of the positioning column and the corresponding positioning holes with the box, and then use the edge of the internal fittings shrapnel fixed mounting



(3) Installation of the lower edge: the power cord, network cable and infrared button 5pin cable should be threaded into the lower edge before assembling the edge on the box.

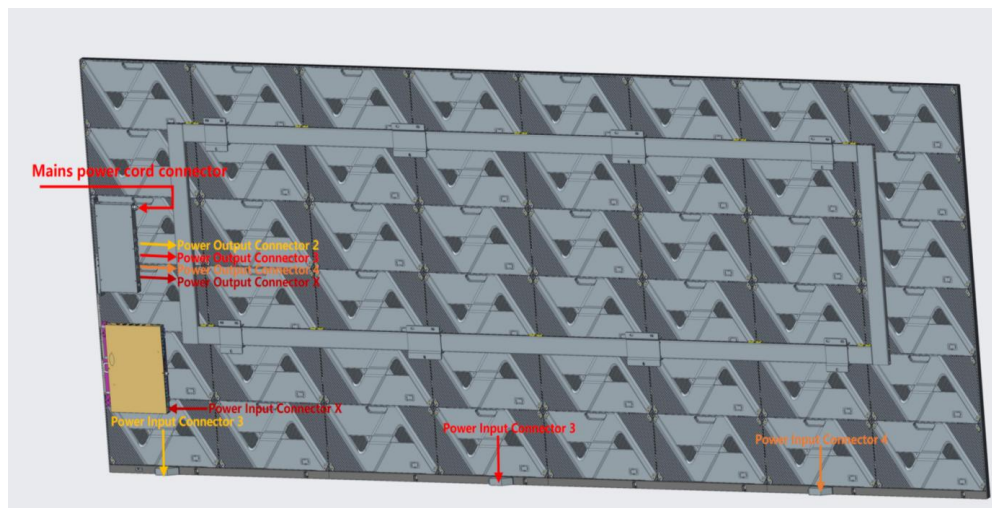


(3) Lower wrap-around segments and screen body installation, the network cable and power cord through the box, lock the lower wrap-around and box fixing screws



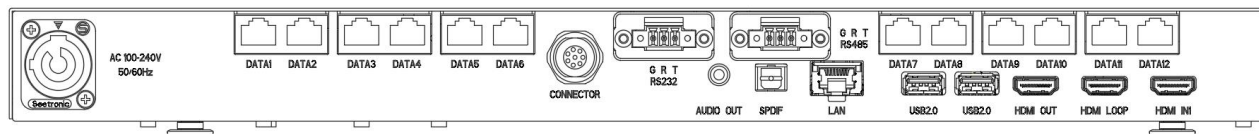
Remarks: The internal structure is subject to the real thing; the wrapping edge with logo and start button is installed on the right side, it is recommended to assemble the lower wrapping edge on the right side first and then assemble the lower wrapping edge on the left side.

#### Power cord alignment schematic:

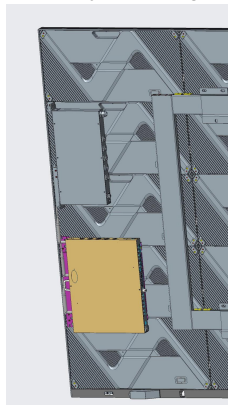


## 2.4.7 Installation of control box

(1) Connect the control box network cable. Connect the cables in order of proximity to the control box, starting with port 1.



(2) Assemble the control box by following the control box slides



## 2.4.8 Mounting Module

Box arrangement coding:

第1行	1-1	1-2	1-3	1-4	1-5	1-6	1-7	1-8
第2行	2-1	2-2	2-3	2-4	2-5	2-6	2-7	2-8
第3行	3-1	3-2	3-3	3-4	3-5	3-6	3-7	3-8
第4行	4-1	4-2	4-3	4-4	4-5	4-6	4-7	4-8
第5行	5-1	5-2	5-3	5-4	5-5	5-6	5-7	5-8
第6行	6-1	6-2	6-3	6-4	6-5	6-6	6-7	6-8
	第1列	第2列	第3列	第4列	第5列	第6列	第7列	第8列

Lamp panel arrangement coding:




	第1列箱体灯板校正编码	第2列箱体灯板校正编码	第3列箱体灯板校正编码	第4列箱体灯板校正编码	第5列箱体灯板校正编码	第6列箱体灯板校正编码	第7列箱体灯板校正编码	第8列箱体灯板校正编码
第1行	1-1-1 1-1-2 1-1-3 1-1-4 1-1-5 1-1-6 1-1-7 1-1-8	1-2-1 1-2-2 1-2-3 1-2-4 1-2-5 1-2-6 1-2-7 1-2-8	1-3-1 1-3-2 1-3-3 1-3-4 1-3-5 1-3-6 1-3-7 1-3-8	1-4-1 1-4-2 1-4-3 1-4-4 1-4-5 1-4-6 1-4-7 1-4-8	1-5-1 1-5-2 1-5-3 1-5-4 1-5-5 1-5-6 1-5-7 1-5-8	1-6-1 1-6-2 1-6-3 1-6-4 1-6-5 1-6-6 1-6-7 1-6-8	1-7-1 1-7-2 1-7-3 1-7-4 1-7-5 1-7-6 1-7-7 1-7-8	1-8-1 1-8-2 1-8-3 1-8-4 1-8-5 1-8-6 1-8-7 1-8-8
第2行	1-2-1 1-2-2 1-2-3 1-2-4 1-2-5 1-2-6 1-2-7 1-2-8	1-2-1 1-2-2 1-2-3 1-2-4 1-2-5 1-2-6 1-2-7 1-2-8	1-2-1 1-2-2 1-2-3 1-2-4 1-2-5 1-2-6 1-2-7 1-2-8	1-2-1 1-2-2 1-2-3 1-2-4 1-2-5 1-2-6 1-2-7 1-2-8	1-2-1 1-2-2 1-2-3 1-2-4 1-2-5 1-2-6 1-2-7 1-2-8	1-2-1 1-2-2 1-2-3 1-2-4 1-2-5 1-2-6 1-2-7 1-2-8	1-2-1 1-2-2 1-2-3 1-2-4 1-2-5 1-2-6 1-2-7 1-2-8	1-2-1 1-2-2 1-2-3 1-2-4 1-2-5 1-2-6 1-2-7 1-2-8
第3行	1-3-1 1-3-2 1-3-3 1-3-4 1-3-5 1-3-6 1-3-7 1-3-8	1-3-1 1-3-2 1-3-3 1-3-4 1-3-5 1-3-6 1-3-7 1-3-8	1-3-1 1-3-2 1-3-3 1-3-4 1-3-5 1-3-6 1-3-7 1-3-8	1-3-1 1-3-2 1-3-3 1-3-4 1-3-5 1-3-6 1-3-7 1-3-8	1-3-1 1-3-2 1-3-3 1-3-4 1-3-5 1-3-6 1-3-7 1-3-8	1-3-1 1-3-2 1-3-3 1-3-4 1-3-5 1-3-6 1-3-7 1-3-8	1-3-1 1-3-2 1-3-3 1-3-4 1-3-5 1-3-6 1-3-7 1-3-8	1-3-1 1-3-2 1-3-3 1-3-4 1-3-5 1-3-6 1-3-7 1-3-8
第4行	1-4-1 1-4-2 1-4-3 1-4-4 1-4-5 1-4-6 1-4-7 1-4-8	1-4-1 1-4-2 1-4-3 1-4-4 1-4-5 1-4-6 1-4-7 1-4-8	1-4-1 1-4-2 1-4-3 1-4-4 1-4-5 1-4-6 1-4-7 1-4-8	1-4-1 1-4-2 1-4-3 1-4-4 1-4-5 1-4-6 1-4-7 1-4-8	1-4-1 1-4-2 1-4-3 1-4-4 1-4-5 1-4-6 1-4-7 1-4-8	1-4-1 1-4-2 1-4-3 1-4-4 1-4-5 1-4-6 1-4-7 1-4-8	1-4-1 1-4-2 1-4-3 1-4-4 1-4-5 1-4-6 1-4-7 1-4-8	1-4-1 1-4-2 1-4-3 1-4-4 1-4-5 1-4-6 1-4-7 1-4-8
第5行	1-5-1 1-5-2 1-5-3 1-5-4 1-5-5 1-5-6 1-5-7 1-5-8	1-5-1 1-5-2 1-5-3 1-5-4 1-5-5 1-5-6 1-5-7 1-5-8	1-5-1 1-5-2 1-5-3 1-5-4 1-5-5 1-5-6 1-5-7 1-5-8	1-5-1 1-5-2 1-5-3 1-5-4 1-5-5 1-5-6 1-5-7 1-5-8	1-5-1 1-5-2 1-5-3 1-5-4 1-5-5 1-5-6 1-5-7 1-5-8	1-5-1 1-5-2 1-5-3 1-5-4 1-5-5 1-5-6 1-5-7 1-5-8	1-5-1 1-5-2 1-5-3 1-5-4 1-5-5 1-5-6 1-5-7 1-5-8	1-5-1 1-5-2 1-5-3 1-5-4 1-5-5 1-5-6 1-5-7 1-5-8
第6行	1-6-1 1-6-2 1-6-3 1-6-4 1-6-5 1-6-6 1-6-7 1-6-8	1-6-1 1-6-2 1-6-3 1-6-4 1-6-5 1-6-6 1-6-7 1-6-8	1-6-1 1-6-2 1-6-3 1-6-4 1-6-5 1-6-6 1-6-7 1-6-8	1-6-1 1-6-2 1-6-3 1-6-4 1-6-5 1-6-6 1-6-7 1-6-8	1-6-1 1-6-2 1-6-3 1-6-4 1-6-5 1-6-6 1-6-7 1-6-8	1-6-1 1-6-2 1-6-3 1-6-4 1-6-5 1-6-6 1-6-7 1-6-8	1-6-1 1-6-2 1-6-3 1-6-4 1-6-5 1-6-6 1-6-7 1-6-8	1-6-1 1-6-2 1-6-3 1-6-4 1-6-5 1-6-6 1-6-7 1-6-8

Installation of modules in numbered sequence



## 3. Product Maintenance

### 3.1 Tool Preparation


Maintenance tool list	Tools	Function	Picture
	Front maintenance tool	Install/Remove LED Module	
	PH2 Phillips screwdriver	Remove/install the screws for the HUB, receiving card and power supply	
	Multimeter	Measuring power supply system	

### 3.2 Maintenance Instructions

#### 3.2.1 Module Maintenance





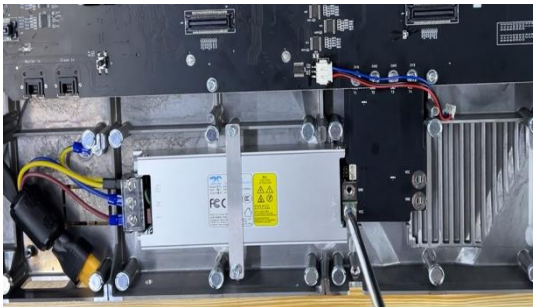
X108 series modules can be quickly removed using passive front maintenance. Open the handle of the front maintenance tool, place the front maintenance tool on the surface of the faulty module to be taken out, pull up the handle of the front maintenance tool, and then gently pull the maintenance tool outward to take it out module.

**Note:** Before maintaining the module, it is necessary to use a dust-free cloth to clean the dust on the surface of the maintenance tool.

Picture			
Steps	❶ Confirm the location of the faulty module and place the front maintenance tool in the middle of the faulty module	❷ Pull up the handle of the maintenance tool, gently pull the maintenance tool outward, and take out the module	❸ Install the spare module on the screen.

#### 3.2.2 HUB/Receiving card /Power maintenance

Use the maintenance tool to remove the module on the faulty panel, and then use a screwdriver to remove the screw fixing the HUB board for replacement

HUB board maintenance	Picture
<p>❶ After removing the module with the maintenance tool, remove the current equalizing wire on the HUB board</p>	
<p>❷ Use a PH2 Phillips screwdriver to remove the screws fixing the HUB board and replace the faulty HUB board</p>	
Receiving card maintenance	Picture
<p>Remove the HUB board, the receiving card is on the back of the HUB board, remove the screws of the receiving card for maintenance</p>	
Power supply maintenance	Picture
<p>❶ After removing the module with the maintenance tool, remove the current equalizing wire on the power supply</p>	
<p>❷ Use a PH2 Phillips screwdriver to remove the fixing power supply screw to directly replace the faulty power supply</p>	

### 3.2.3 Precautions for use

1. Pay attention to anti-static when touching LED light boards and panels, and do the following effective protection:

- a. Wear a grounded electrostatic wrist strap or electrostatic gloves;
  - b. The screen is strictly grounded, and the grounding resistance is required to be  $\leq 10$  ohms, and a point inspection is carried out every six months;
2. When cleaning the surface of the lamp panel, do not use unknown chemical liquids, but use a clean dust-free or clean water damp cloth to wipe lightly.

## 4. Handling of common problems

No.	Common faults	Solution
1	Some modules are not lighting on	1. Check whether the power plug of the corresponding module is tightly inserted;
		2. Check whether the power cable of the corresponding module is burnt out;
		3. Check whether the switch power supply of the corresponding module has no output;
		4. Check whether the flat cable of the corresponding module is malfunctioning;
		5. Replace the flat cable of the corresponding module;
		6. Replace the module;
		7. Replace the receiving card;
		8. Send rcfg file;
2	The whole screen is not lighting on	1. Check whether the screen power is on;
		2. Check whether the DVI cable or HDMI cable is loose;
		3. Check whether the main data cable is inserted tightly;
		4. Check whether the sending card is powered on and whether the running indicator is flashing;
		5. Replace the sending card;
		6. Connecting the computer to an LCD display, check whether there is output on video card;
		7. Update the video card driver;
		8. Replace the computer;
3	Screen show scrambled image	1. Check whether the power plug of the receiving card is tightly inserted;
		2. Check whether the power cable of the receiving card is burnt out;
		3. Check whether the power supply has no output;
		4. Check the data cable of the receiving card;
		5. Replace the data cable;
		6. Send the rcfg file;
		7. Upgrade the firmware version of the receiving card;
		8. Replace the receiving card;
4	Chromatic aberration between modules	1. Check whether the module power plug is plugged tightly;
		2. Replace the flat cable;
		3. Replace the power supply;
		4. Replace the module;
		5. Replace the receiving card;

5	All LED panels display the same content	1. Set the screen connection on software;
		2. Check whether the data port is wrong.
6	No control system detected	1. Check the USB cable;
		2. Check whether the computer USB port is malfunctioning;
		3. Update the USB driver;
		4. Replace the USB cable;
		5. Replace the sending card;
7	No multi-function card detected	1. Check whether the distribution cabinet is in the automatic state;
		2. Check whether the multi-function card is powered;
		3. Replace the power supply of the multi-function card;
		4. Check whether the main data cable is inserted into the wrong data port;
		5. Check whether the sending card data port is malfunctioning;
		6. Re-add the multi-function card;
		7. Replace the multi-function card;
		8. Replace the sending card;
8	No full screen display	1. Check whether the setting of the playback window is normal;
		2. Check the output resolution of the video processor;
		3. Check the output window of the video processor;



DISCLAIMER: The contents of this document may be updated from time to time due to product version upgrades or for other reasons. Unless otherwise agreed, this document is intended only as a guide for use and all statements, information and recommendations contained herein do not constitute any warranty, express or implied.

Damage to the equipment caused by failure to follow documentation is not covered by the equipment warranty.

## Professional Service, Best Experience

Absen has built up a global network , able to provide prompt and professional local services.

### Absen service philosophy

Initiative	Efficiency
Proactive care and return visits, regular touring inspection services for customers	All service channels respond within 10 seconds, intelligently match the best local service resources, and enjoy a fast service experience
Standardization	Thoughtfulness
Comprehensive service engineer training system, ACE professional training and certification, ACP professional certification; establishing customer' s product files and record the entire service process	Longer warranty, worry-free quality

	<b>Service channels</b> Hot line: +86 400-700-3278 WeChat: 13923413428 WhatsApp: 008613923413428 E-mail: service@absen.com Official website: www.absen.com		<b>Service time(GMT+8)</b> 7X24 hours online service
---	---	---	---



All rights reserved by Shenzhen Absen Optoelectronic Co., Ltd.

Shenzhen Absen Optoelectronic Co., Ltd. reserves the rights to modify contents without any further notice.