

# HEAT

Outdoor Products



Sophisticated  
Style

High  
Performance  
Cooking



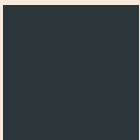
# HEAT

*Kamado Ceramic Grill*



Heat Kamado Grills provide the ultimate barbeque cooking experience. It boasts the most cooking space in its class with a 19-inch main cooking rack, plus a lower rack and additional half rack. Its beautifully finished exterior is a smooth double-glazed finish with cast stainless chimney and 304 stainless cart with oak side shelves.

## Available Colors



Gunmetal



Rust



Sand



Copper

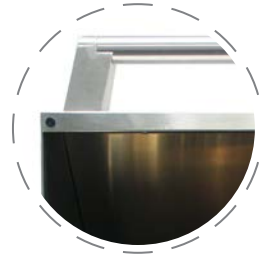
- Multi-Position 19" rack for larger items
- Quick and easy access to lower racks
- Custom cooking grid with two doors
- Stunning and durable double-glazed finish
- Cast stainless chimney top
- 304 stainless cart with casters (optional)
- 2 oak side shelves with steel frame & brackets (optional)

## Available Accessories

- Built-In kit for outdoor kitchens
- Kamado stone: heat deflector & pizza stone in one
- Ash cleaning tool
- Secondary half grid for additional cooking area
- Cover (for grill and cart together)

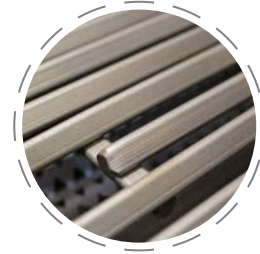


## Features



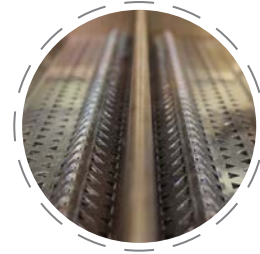
### Professional Style Double Walled Hood

304 18/8 stainless steel hood provides superior heat retention. Reduces discoloration and cool to touch.



### Diamond V Cooking Grid

Heavy duty diamond shape produces high temperature superior cooking and easy cleaning.



### Diamond V Flame Stabilizers

State-of-the-art design reduces flare-ups, creates even heat and maximizes flavor.



### Cast Burners with Heat Zone Separators

Cast stainless steel burners create high heat while the heat-zone separators isolate cooking areas offer high temperatures and multiple cooking zones.



### HEAT Control Lighting

Unique cool red LEDs illuminate the control panel and knobs. 110 volt provides reliable operation.



### Push N' Turn Flame Thrower Control Knobs

Simply push and turn to light and control heating settings for individual burners

Heat Grills offer high performance and sophistication at a fantastic value! These professional quality grills are built from 304, 18/8 stainless steel, offer commercial-grade cast stainless steel burners and stainless cooking grids to help ensure your Heat grill will provide maximum performance for years to come.

- 14,000 BTU's per burner
- 10,000 BTU Infrared Rotisserie Burner
- Diamond V stainless steel cooking grids for even heating
- Heavy-duty construction built for years of use
- Heat-zone separators create multiple cooking zones
- Diamond V flame stabilizers minimize flareups
- Removable warming rack
- Full-width drip tray that's easy to clean
- Quick-start push and turn ignition system
- Stylish cool red LED panel and control lighting at 110 V
- Optional 14,000 BTU sear burner can replace any burner



**HTS-540**

*40" 5 burner gas grill  
80,000 BTU*



**HTS-432**

*32" 4 burner gas grill  
66,000 BTU*



# Cutout Specifications\*

## GRILLS

MODEL	A	B	C
HTS-432-LP/NG	8 1/2	30 5/8	21 1/4
HTS-540-LP/NG	8 1/2	38 3/8	21 1/4

## SIDE BURNERS

MODEL	A	B	C
HTS-SB1-LP/NG	8 1/2	23 1/4	21 1/4
HTS-SB2-LP/NG	8 1/2	30 5/8	21 1/4

## POWER BURNERS

MODEL	A	B	C
HTS-PB-LP/NG	8	14	19 1/2

## ACCESSORIES

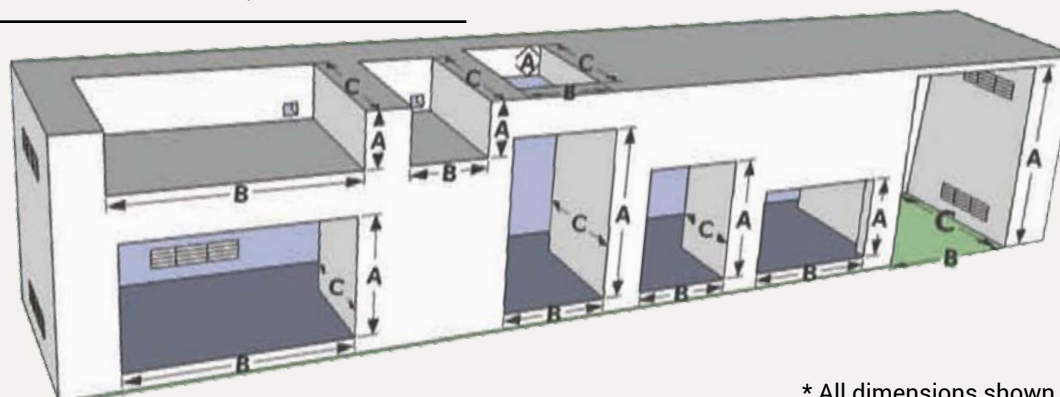
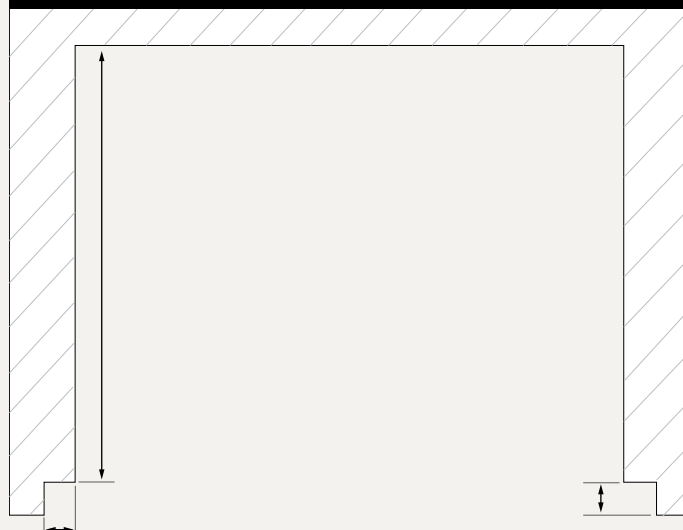
MODEL	A	B	C
HTX-DR-DRWR-39	19 1/2	37 5/8	20 5/8
HTX-DR-DRWR	19 1/2	30 1/4	20 3/4
HTX-DR-DOUBLE-4B	18 1/4	28 3/4	
HTX-DR-DOUBLE-5B	18 1/4	35 3/4	
HTX-DRWR-SINGLE	10	15 3/8	21
HTX-DRWR-DOUBLE	19 5/8	15 3/8	21
HTX-DRWR-TRIPLE	27 5/8	15 3/8	21
HTX-PT-HOLDER	8 3/4	14 1/8	8 7/8
HTX-DR-SINGLE-14X20	20 1/4	14 1/4	
HTX-DR-SINGLE	24 1/4	17	
HTX-DR-SINGLE-20X14	14 1/4	20 1/4	
HTX-DR-SINGLE-24X17	17	24 1/4	

## INSULATED JACKETS

MODEL	A	B	C
HTX-INSJACK-4B	9 5/8	33	22 1/4
HTX-INSJACK-5B	9 5/8	40 3/4	22 1/4
HTX-INSJACK-2SB	9 5/8	13	22 1/4

## COUNTER NOTCH DETAIL

Measurements of the notch dimension depends on the counter top material installed.



\* All dimensions shown are in inches



**HTX-DR-SINGLE**  
Single Door



**HTX-DRWR-SINGLE**  
Single Drawer



**HTX-DRWR-DOUBLE**  
Double Drawer Set



**HTX-DRWR-TRIPLE**  
Triple Drawer Set



**HTX-DR-DOUBLE-4B**  
Double Door



**HTX-DR-DOUBLE-5B**  
Double Door



**HTX-DR-DRWR**  
Door Drawer Combo



**HTX-DR-DRWR-39**  
39" Door/Drawer Combo



**HTX-DR-SINGLE-20X14**  
Single Access Door Horizontal  
20" w x 14" h



**HTX-DR-SINGLE-14X20**  
Single Access Door Vertical  
20" h x 14" w



**HTX-DR-SINGLE-24X17**  
Single Access Door Horizontal  
24" w x 17" h



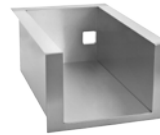
**HTX-DRWR-TRLP**  
LP Tank Drawer/Trash Drawer



**HTX-INSJACK-4B**  
Insulated Jacket 4 BNR



**HTX-INSJACK-5B**  
Insulated Jacket 5 BNR



**HTX-INSJACK-2SB**  
Insulated Jacket Double  
Side Burner



**HTX-PT-HOLDER**  
Paper Towel Holder



**HTX-IRBURNER**  
IR Sear Burner for Grill  
14,000 BTU



**HTX-PIZZASTONE**  
Pizza Stone



**HTX-CART-432**  
4 Burner Basic Cart Only



**HTX-CART-540**  
5 Burner Basic Cart Only



**HTX-COVERBI-4B**  
4 Burner Built-In Cover



**HTX-COVERCRT-4B**  
4 Burner Cart Cover



**HTX-COVERCRT-5B**  
5 Burner Cart Cover



**HTX-COVERBI-4B**  
4 Burner Built-In Cover



**HTX-ROTISS-5B**  
Waterproof Rotisserie for  
5 Burner Grills



**HTX-ROTISS-4B**  
Waterproof Rotisserie for  
4 Burner Grills



**HTS-SB2**  
Double Side Burner  
(Image coming soon)



**HTS-PBL**  
Power Burner  
(Image coming soon)



## WARRANTY INFORMATION

All Heat Gas Grills are warranted for the lifetime of the original owner against defects in manufacturing and workmanship. This warranty covers the cooking grids, stainless housing and the stainless burners against rust-through. Control valves are warranted for 15 years, 5 years for the flame tamers and heat zone separators while all other components are covered for 1 year from the date of purchase.



For more information, please contact your **HEAT** representative

Heat Outdoor Living  
PO Box 16262  
Philadelphia, PA 19114  
877-397-5144 or [CustomerService@heatoutdoorliving.com](mailto:CustomerService@heatoutdoorliving.com)  
[www.heat-outdoorliving.com](http://www.heat-outdoorliving.com)

